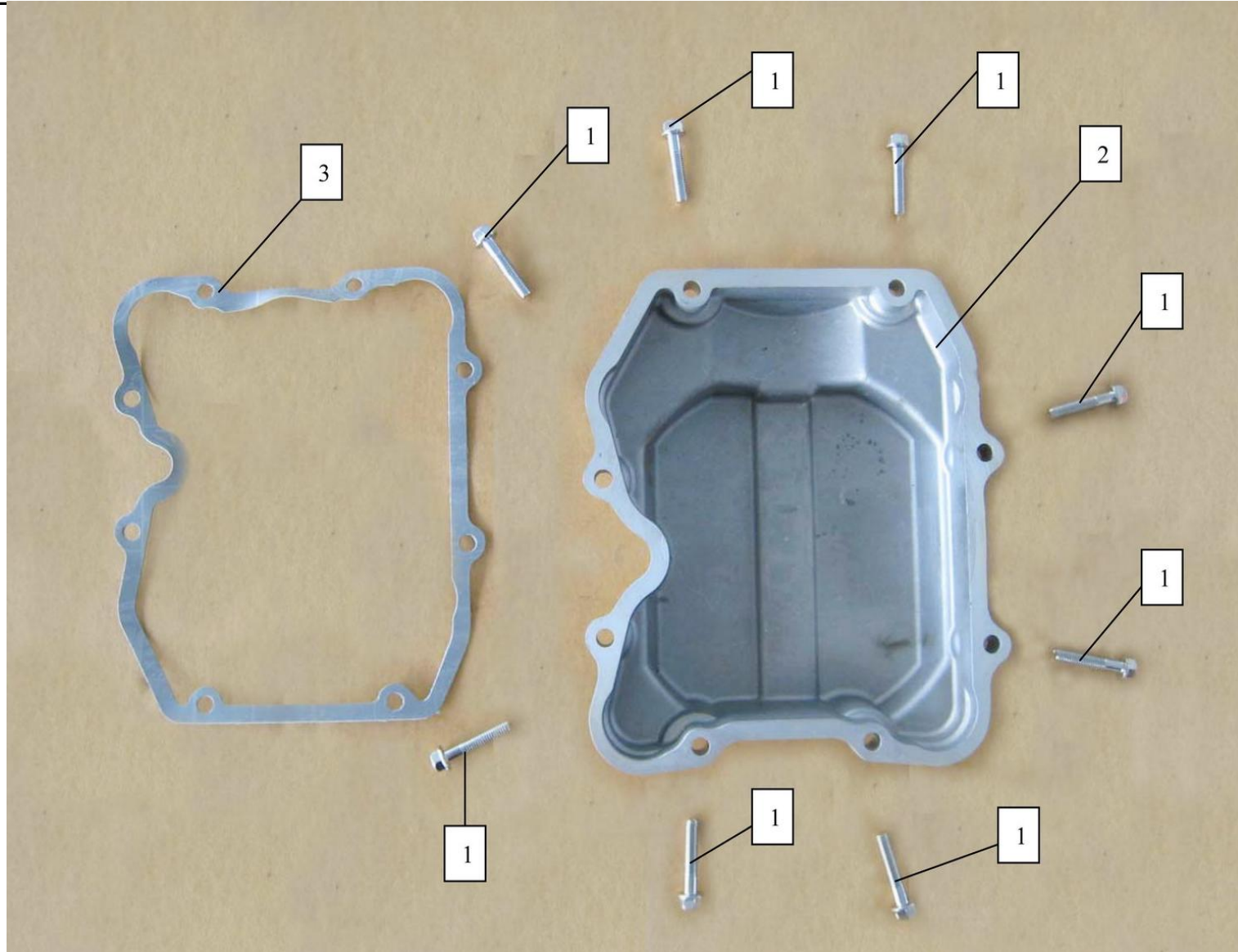
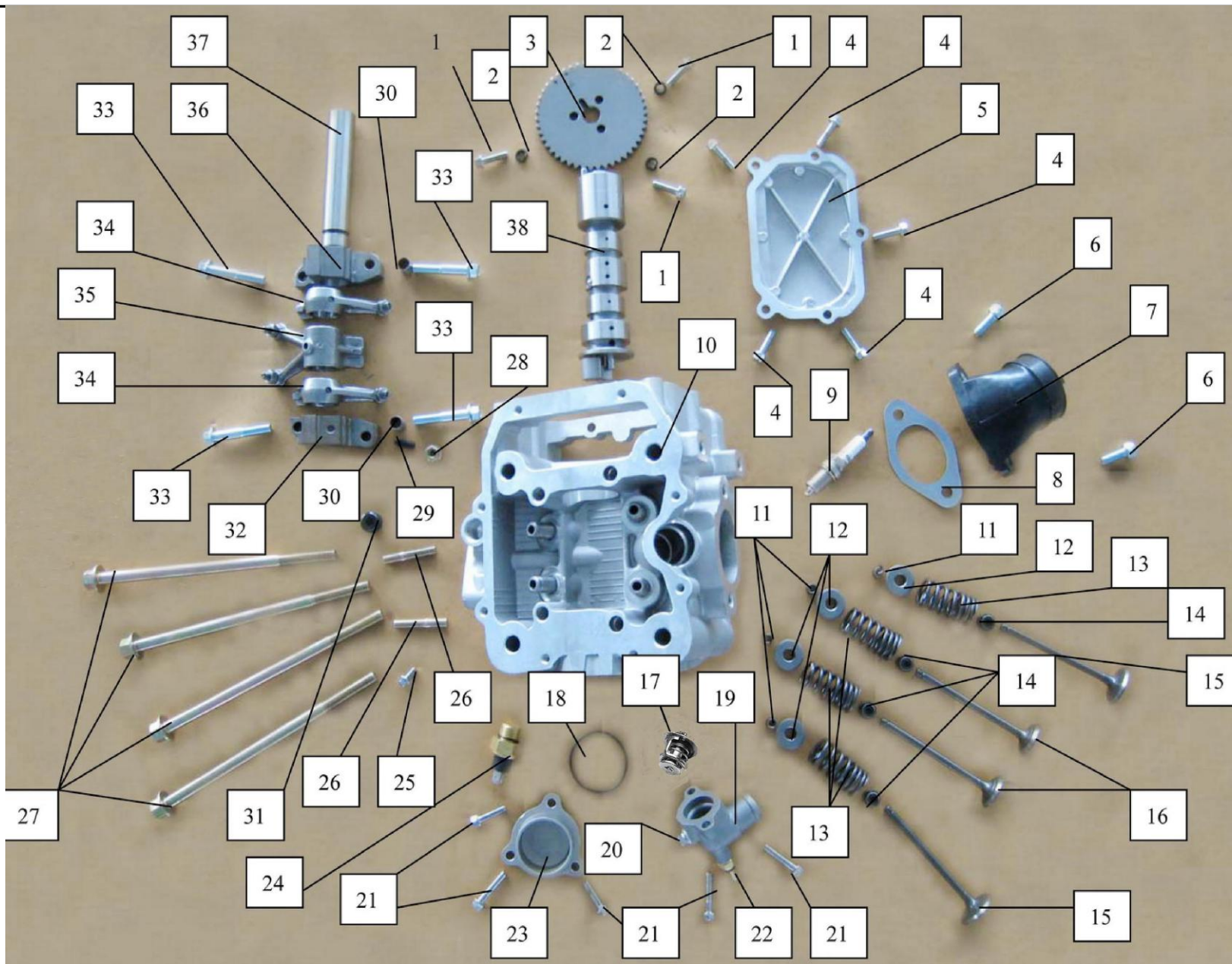


2901...E 气缸头盖 CYLINDER HEAD COVER



CODE	PART CODE	DESCRIPTION (EN)	DESCRIPTION (CN)	Q' TY	REMARKS
1	9111-060285	BOLT, FLANGE (M6×28)	六角法兰面螺栓 (M6×28)	8	
2	11121-5020	CYLINDER HEAD COVER	气缸头盖	1	
3	11124-5020	GASKET, CYLINDER HEAD	气缸头盖垫	1	

2902...E 气缸头 CYLINDER HEAD

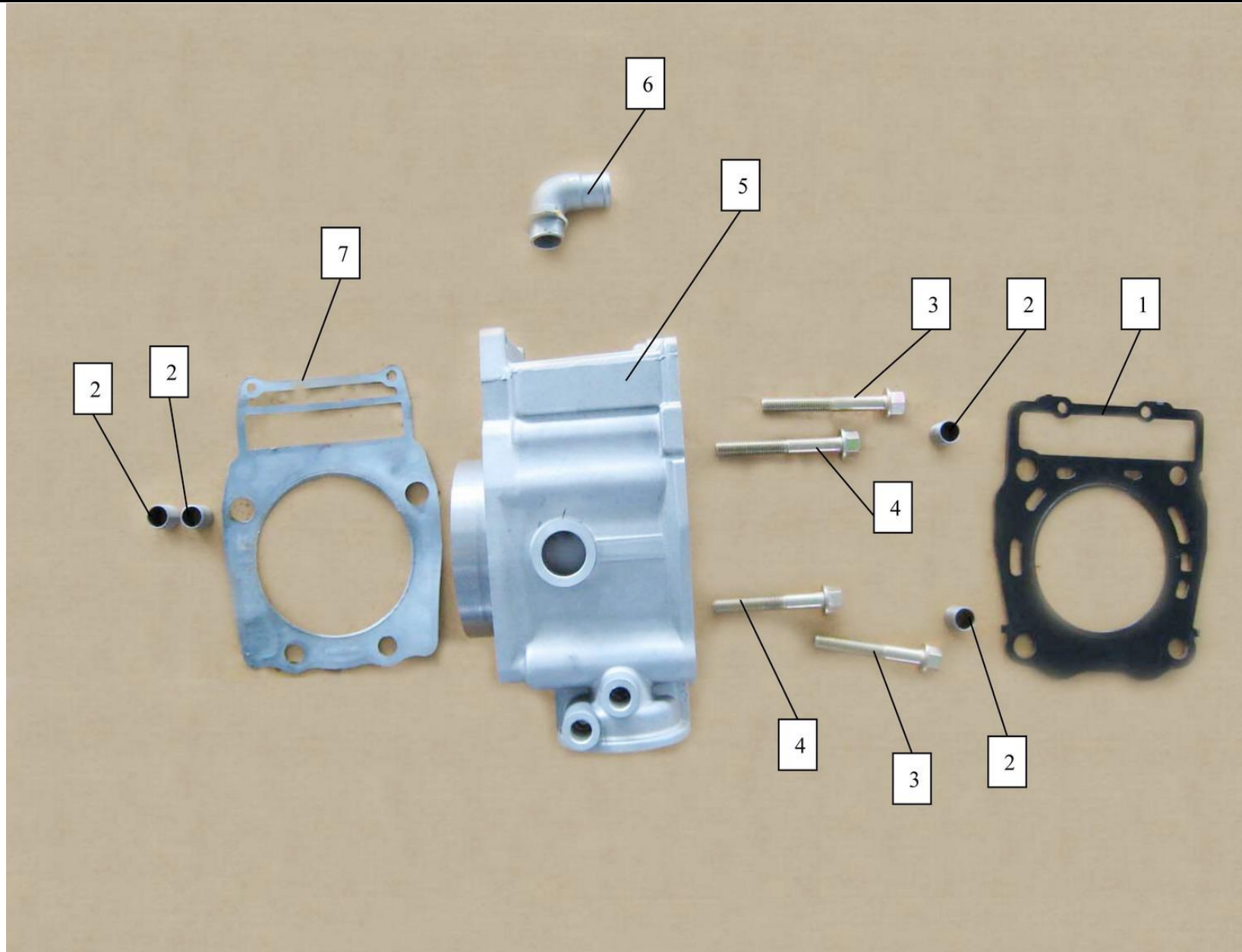


CODE	PART CODE	DESCRIPTION (EN)	DESCRIPTION (CN)	Q' TY	REMARKS
1	9111-060205	BOLT, FLANGE (M6×20)	六角法兰面螺栓(	3	

2	9521-061007	RETAINER ( $\phi 6 \times \phi 10 \times 2$ )	弹簧垫 ( $\phi 6 \times \phi 1$ )	3		
3	12731-5020	TIMING SPROCKET	正时链轮	1		
4	9111-060225	BOLT, FLANGE (M6 $\times$ 22)	六角法兰面螺栓 (	5		
5	11122-5020	SIDE COVER, CYLINDER	气缸头侧盖	1		
6	9323-082001	INNER HEX	内六角圆柱头螺	2		
7	13110-5020	PIPE, IMPORT AIR	进气管组件	1		
8	13131-5020	GASKET, IMPORT AIR	进气口垫	1		
9	33511-5020	SPARK PLUG (K6RTC)	火花塞 (K6RTC)	1		
10	11110-5020	CYLINDER HEAD, ASSY	气缸头组件	1		
11	12914-5020	LOCK CLIP VALVE	锁键	8		
12	12913-5020	UPPER SEAT, VALVE	气门承盘	4		
13	9811-320428	SPRING ( $\phi 3.2 \times \phi 23 \times 42$ )	气门弹簧 ( $\phi 3.2$ )	4		
14	9913-061300	DUST	气门油封 ( $\phi 6 \times \phi$ )	4		
15	12911-5020	IN. VALVE	进气门	2		
16	12912-5020	EX. VALVE	排气门	2		
17	17611-5020	THERMOSTAT, ASSY	节温器总成	1		
18	9921-204300	O-RING ( $\phi 43 \times 2$ )	O型圈 ( $\phi 43 \times 2$ )	1		
19	17621-5020	COVER, THERMOSTAT	节温器盖	1		
20	9111-060105	BOLT, FLANGE (M6 $\times$ 10)	六角法兰面螺栓 (	1		
21	9111-060225	BOLT, FLANGE (M6 $\times$ 22)	六角法兰面螺栓 (	5		
22	17631-5020	WATER TEMPERATURE	水温传感器	1		
23	11123-5020	HEAD COVER, CAMSHAFT	凸轮轴端盖	1		
24	17641-5020	SWITCH, TEMPERATURE	冷却风扇开关组	1		

25	9111-060105	BOLT, FLANGE (M6×10)	六角法兰面螺栓(	1		
26	9211-080423	BOLT (M8×42)	排气口螺柱(M8×	2		
27	9112-101903	BOLT, FLANGE (M10×190	六角法兰面螺栓(	4		
28	9411-060603	NUT (M6)	螺母(M6)	1		
29	9365-061707	BOLT ORIENTATION	锥端紧定螺钉	1		
30	9613-101400	PIN, ORIENTATION(φ10	定位销(φ10×14	2		
31	9223-160127	PLUG, CHANNEL	水道观察塞	1		
32	12814-5020	HOLDER, LEFT ARM	左摇臂座	1		
33	9113-080451	BOLT, FLANGE (M8×45)	六角法兰面螺栓(	4		
34	12812-5020	ARM , INTAKE	进气摇臂	2		
35	12811-5020	ARM ASSY, EXHAUST	排气摇臂	1		
36	12815-5020	HOLDER, RIGHT ARM	右摇臂座	1		
37	12813-5020	SHAFT, ARM	摇臂轴	1		
38	12710-5020	CAMSHAFT ASSY	凸轮轴总成	1		
39			减压阀甩块	1		在凸轮轴总成里
			进气管抱箍	1		

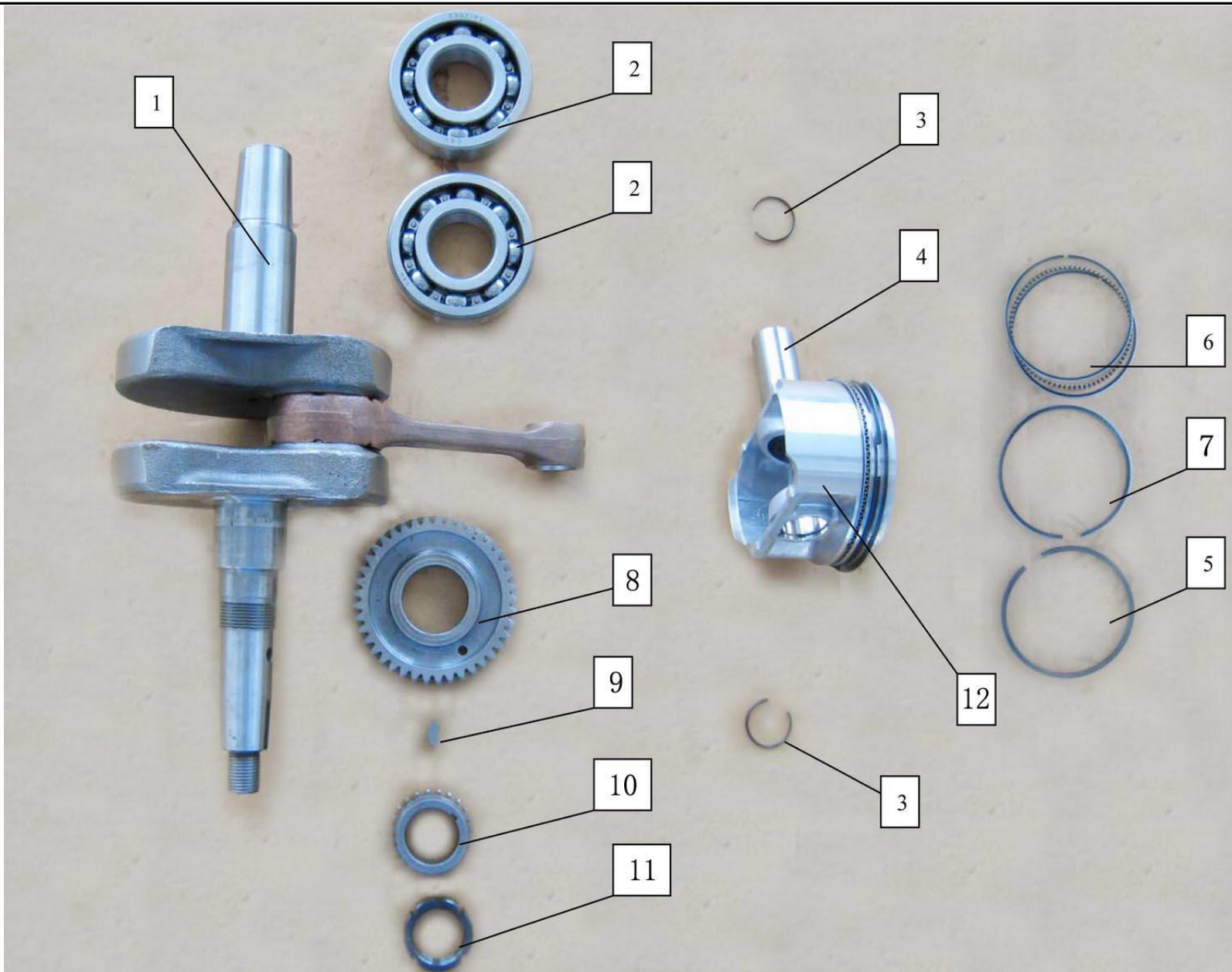
2903...E 气缸体 CYLINDER BODY



CODE	PART CODE	DESCRIPTION (EN)	DESCRIPTION (CN)	Q' TY		REMARKS
1	11114-5020	WASHER, CYLINDER HEAD	气缸头垫	1		
2	9613-152000	PIN, ORIENTATION(φ 15×20)	定位销(φ 15×20)	4		

3	9112-100803	BOLT, FLANGE (M10×80)	气缸体固定螺栓 (M10×80)	2		
4	9112-100703	BOLT , FLANGE (M10×70)	气缸体固定螺栓 (M10×70)	2		
5	11210-5020	CYLINDER BODY	气缸体分组件	1		
6	11221-5020	JOINT, IMPORT WATER	进水接头	1		
7	11222-5020	WASHER, CYLINDER BODY	气缸垫	1		
8						
9						
10						
11						
12						
13						
14						
15						
16						
17						
18						
19						
20						
21						
22						
23						
24						

2904...E 曲轴/活塞 CRANKSHAFT/PISTON

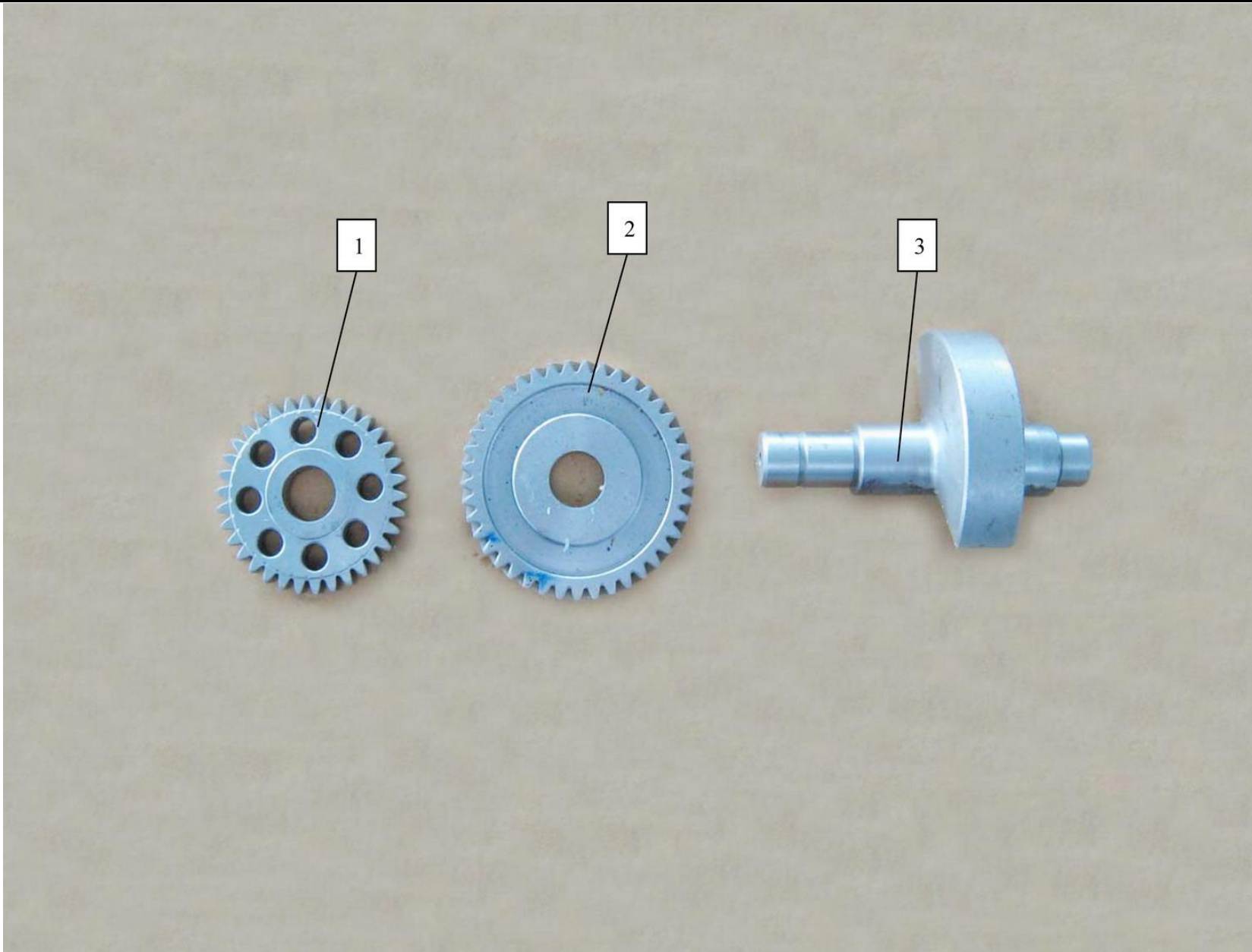


CODE	PART CODE	DESCRIPTION (EN)	DESCRIPTION (CN)	Q' TY		REMARKS
1	12200-5020	CRANKSHAFT ASSY	曲轴总成	1		
2	6307 GB/T276-94	BEARING 6307	滚珠轴承6307	2		

3	9565-230157	CIRCLIP (Φ 23×1.5)	C形扣环 (Φ 23×1.5)	2		
4	12112-5020	PISTON PIN (Φ 13.5×Φ 23×58)	活塞销 (Φ 13.5×Φ 23×58)	1		
5	12121-5020	FIRSTLY RING	第一环	1		
6	12130-5020	PISTON RING	刮油环组合	1		
7	12122-5020	SECONDLY RING	第二环	1		
8	12311-5020	DRIVE GEAR, BALANCER (Z=41T)	平衡主动齿 (Z=41T)	1		
9	9691-401260	WOODRUFF KEY (4×5.5×12.6)	半圆键 (4×5.5×12.6)	1		
10	12721-5020	DRIVE GEAR, TIMING	正时主动链轮	1		
11	9431-270907	NUT	圆螺母	1		
12	12111-5020	PISTON	活塞	1		
13						
14						
15						
16						
17						
18						
19						
20						
21						
22						
23						
24						



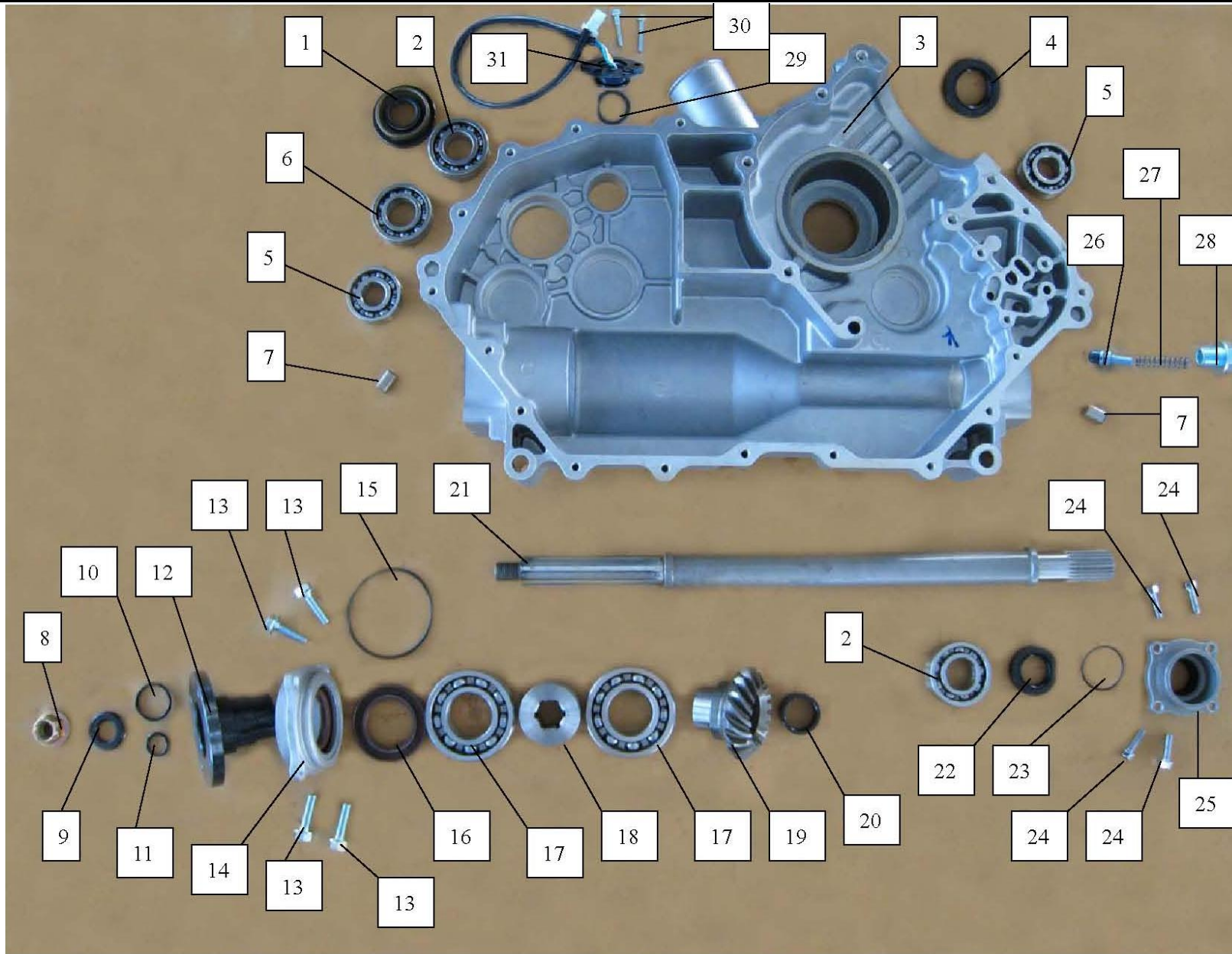
2905...E 平衡轴 BALANCER SHAFT



CODE	PART CODE	DESCRIPTION (EN)	DESCRIPTION (CN)	Q' TY	REMARKS
1	16311-5020	DRIVE GEAR, OIL PUMP	油泵主动齿 (Z=34T)	1	
2	12322-5020	SECONDARY GEAR, BALANCER	平衡从动齿 (Z=41T)	1	

3	12321-5020	BALANCER SHAFT	平衡轴	1		
4						
5						
6						
7						
8						
9						
10						
11						
12						
13						
14						
15						
16						
17						
18						
19						
20						
21						
22						
23						
24						

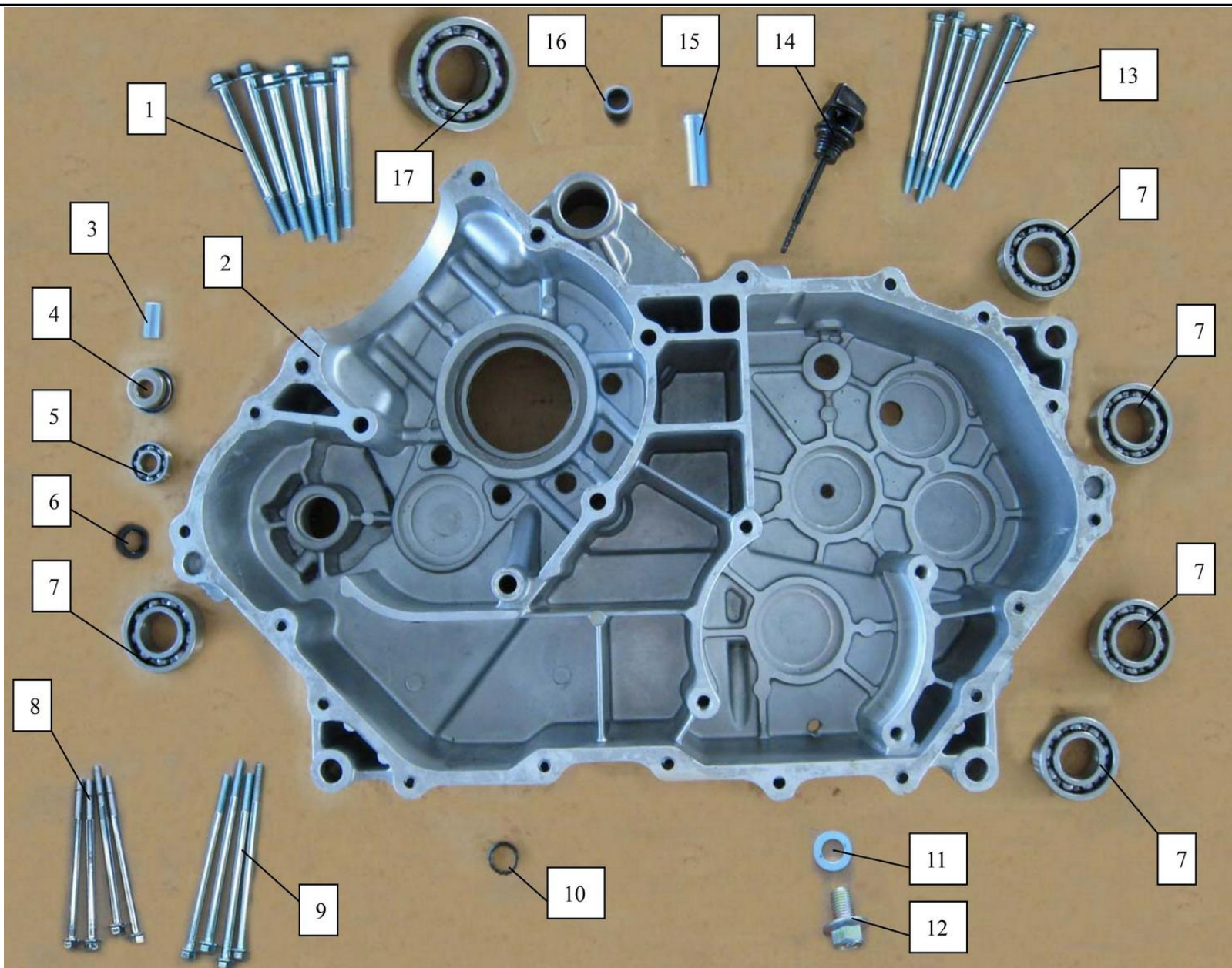
# 2906...E 左箱体 CRANKCASE (L)



CODE	PART CODE	DESCRIPTION (EN)	DESCRIPTION (CN)	Q' TY		REMARKS
1	9913-254700	RING (25×47×13)	油封 (25×47×13)	1		
2	6205N GB/T276-94	BEARING 6205N	滚珠轴承6205N	1		

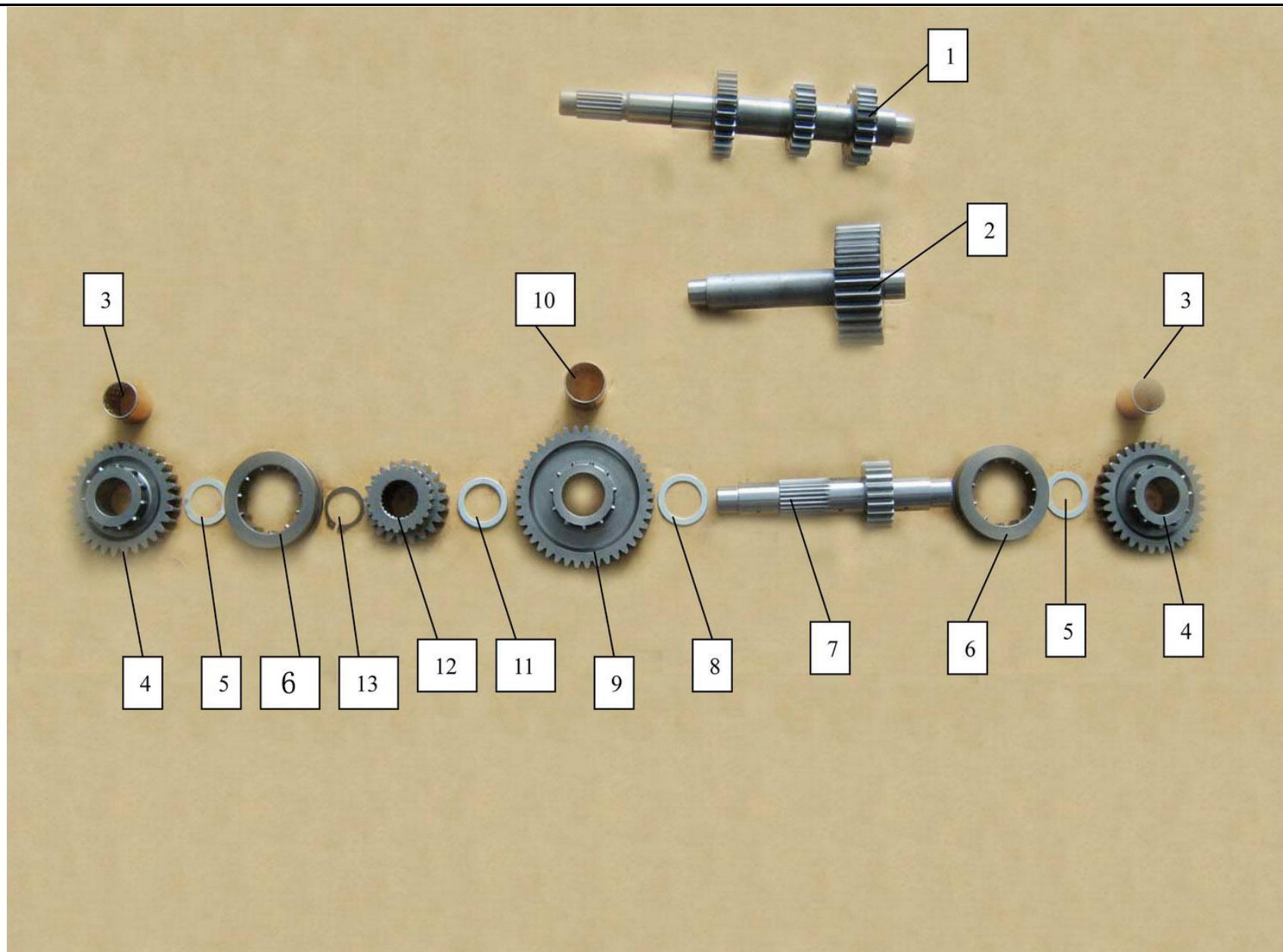
3	11310-5020	CRANKCASE (LEFT)	左箱体组件	1	
4	9911-354800	OIL SEAL (35×48×8)	油封 (35×48×8)	1	
5	6204 GB/T276-94	BEARING 6204	滚珠轴承6204	2	
6	6304 GB/T276-94	BEARING 6304	滚珠轴承6304	1	
7	9611-121800	PIN, CRANKCASE (Φ 12×18)	定位销 (Φ 12×18)	2	
8	9412-161603	NUT, FLANGE (M16)	带自锁法兰面螺母 (M16)	1	
9	9511-163207	WASHER (Φ 16×Φ 32×2)	垫圈 (Φ 16×Φ 32×2)	1	
10	9921-302800	O-RING (Φ 28×3)	O形圈 (Φ 28×3)	1	
11	9921-301600	O-RING (Φ 16×3)	O形圈 (Φ 16×3)	1	
12	24811-5020	JOINT, FLANGE	输出轴法兰盘	1	
13	9113-080321	BOLT, FLANGE (M8×32)	六角法兰面螺栓 (M8×32)	4	
14	24832-5020	REAR COVER, BEARING	后轴承盖	1	
15	9921-306700	O-RING (Φ 67×3)	O形圈 (Φ 67×3)	1	
16	9911-406200	OIL SEAL (40×62×8)	油封 (40×62×8)	1	
17	6207 GB/T276-94	BEARING 6207	滚珠轴承6207	2	
18	24821-5020	SPACER, FLANGE	法兰盘定位套	1	
19	24912-5020	SUBULATE GEAR (Z=16T)	锥齿轮 (Z=16T)	1	
20	9711-251507	SPACER, SUBULATE GEAR	锥齿轮定位套	1	Φ 25×Φ 32×15
21	24131-5020	EXPORT SHAFT	输出轴	1	
22	9911-254000	OIL SEAL (25×40×7)	油封 (25×40×7)	1	
23	9921-304650	O-RING (Φ 46.5×3)	O形圈 (Φ 46.5×3)	1	
24	9111-060225	BOLT, FLANGE (M6×22)	六角法兰面螺栓 (M6×22)	4	
25	24831-5020	FRONT COVER, BEARING	前轴承盖	1	
26	16190-5020	VALVE , SUPPLY	限压阀组件	1	
27	9811-050298	SPRING, VALVE	限压阀弹簧	1	
28	9116-120121	BOLT, FLANGE (M12×12)	六角法兰面螺栓 (M12×12)	1	
29	9921-252700	O-RING (Φ 27×2.5)	O形圈 (Φ 27×2.5)	1	
30	9111-060161	BOLT, FLANGE (M6×16)	六角法兰面螺栓 (M6×16)	2	
31	34610-5020	GEAR SHOW, ASSY	档显器组件	1	

2907...E 右箱体 CRANKCASE (R)



CODE	PART CODE	DESCRIPTION (EN)	DESCRIPTION (CN)	Q' TY		REMARKS
1	9113-080901	BOLT, FLANGE M8×90	六角法兰面螺栓(M8×90)	6		
2	11320-5020	CRANKCASE (RIGHT)	右箱体组件	1		

3	9711-062001	SPACER, , WATER SEAL	水封内套	1		
4	9931-062500	WATER SEAL	水封	1		
5	6001 GB/T276-94	BEARING 6001	滚珠轴承6001	1		
6	9911-152600	OIL SEAL (15×26×7)	油封(15×26×7)	1		
7	6304 GB/T276-94	BEARING 6304	滚珠轴承6304	5		
8	9111-060855	BOLT, FLANGE (M6×85)	六角法兰面螺栓 (M6×85)	4		
9	9111-061151	BOLT, FLANGE (M6×115)	六角法兰面螺栓 (M6×115)	4		
10	9921-201000	O-RING ( φ 10×2)	O形圈 ( φ 10×2)	1		
11	9513-101800	WASHER ( φ 10× φ 18×1.5)	铝垫片 ( φ 10× φ 18×1.5)	1		
12	9111-100161	BOLT, FLANGE (M10×16)	六角法兰面螺栓 (M10×16)	1		
13	9111-060955	BOLT, FLANGE (M6×95)	六角法兰面螺栓 (M6×95)	6		
14	11421-5020	OIL RULER	机油尺	1		
15	11431-5020	JOINT, PIPE ( φ 11× φ 13×41)	呼吸管接头	1		
16	9714-121400	BUSH, CLUTCH ( φ 12× φ 17×14)	超越离合器孔衬套	1		
17	6207 GB/T276-94	BEARING 6207	滚珠轴承6207	1		
18						
19						
20						
21						
22						
23						
24						

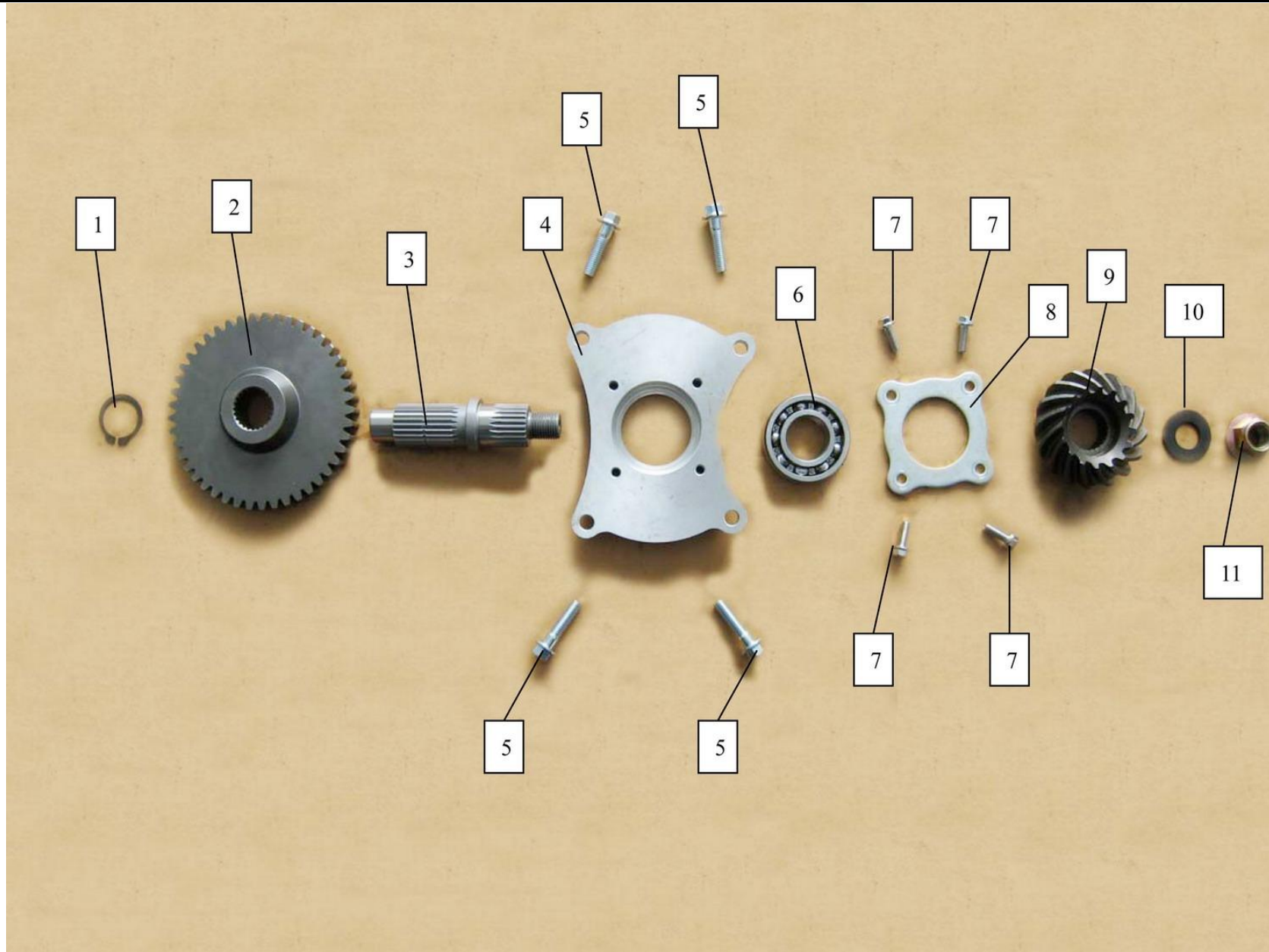


CODE	PART CODE	DESCRIPTION (EN)	DESCRIPTION (CN)	Q' TY	REMARKS
1	24121-5020	SHAFT SET	驱动轴	1	
2	24141-5020	IDLE GEAR SHAFT (Z=30T)	倒档轴 (Z=30T)	1	

3	9716-242500	BUSH, CUPRUM(φ24×φ26×25)	铜套(φ24×φ26×25)	2		
4	24211-5020	GEAR, HIGH-SPEED(Z=30T)	高档齿轮(Z=30T)	2		
5	9511-243307	WASHER(φ24×φ33×1)	垫圈(φ24×φ33×1)	2		
6	24251-5020	BUSH, GLIDE	滑动套	2		
7	24111-5020	SECONDARY SHAFT	副轴	1		
8	9511-26A500	WASHER(φ26×φ35×1)	垫圈(φ26×φ35×1)	1		
9	24221-5020	GEAR, LOW GEAR(Z=41T)	低档齿轮(Z=41T)	1		
10	24222-5020	BUSH, LOW GEAR	低档齿轮衬套	1		
11	9511-263500	WASHER(φ26×φ35×2)	垫圈(φ26×φ35×2)	1		
12	24241-5020	GEAR, SPEED-DOWN(Z=21T)	减速齿(Z=21T)	1		
13	9561-230107	CIRCLIP	C形挡圈	1		
14						
15						
16						
17						
18						
19						
20						
21						
22						
23						
24						



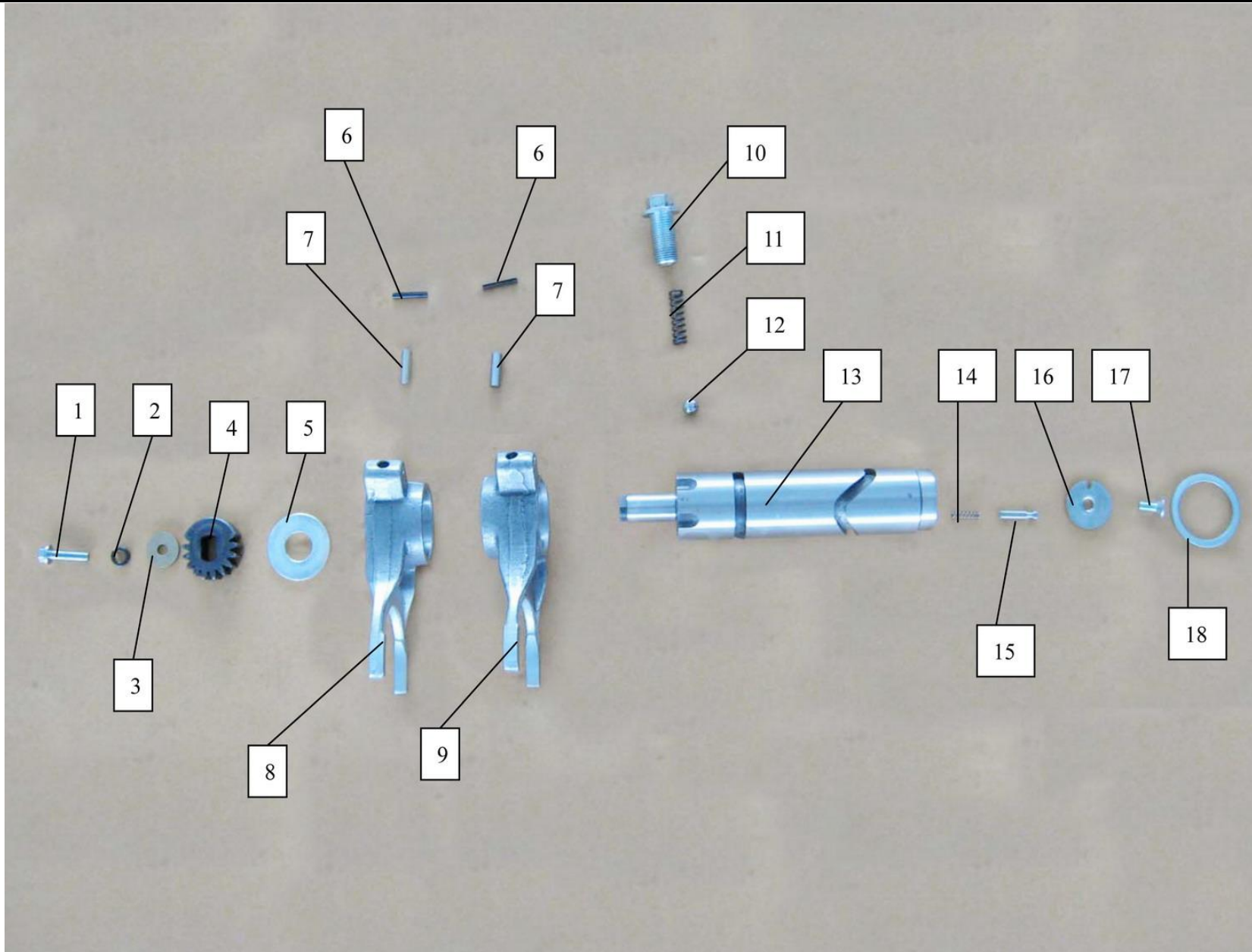
2909...E 传动机构2 TRANSMISSION MECHANISM 2



CODE	PART CODE	DESCRIPTION (EN)	DESCRIPTION (CN)	Q' TY		REMARKS
1	9561-250107	CIRCLIP	C形挡圈	1		
2	24611-5020	GEAR, SLOWDOWN ((Z=45T))	减速齿轮 (Z=45T)	1		

3	24151-5020	DRIVEN SHAFT	从动轴	1		
4	24712-5020	HOLDER	固定座	1		
5	9113-080321	BOLT, FLANGE (M8×32)	六角法兰面螺栓 (M8×32)	4		
6	6205N GB/T276-94	BEARING 6205N	滚珠轴承6205N	1		
7	9111-060225	BOLT, FLANGE (M6×22)	六角法兰面螺栓 (M6×22)	4		
8	24711-5020	HOLDER, BEARING	轴承盖板	1		
9	24911-5020	SUBULATE GEAR (Z=16T)	锥齿轮 (Z=16T)	1		
10	9511-163207	WASHER (Φ 16× Φ 32×2)	垫圈 (Φ 16× Φ 32×2)	1		
11	9412-161603	NUT, FLANGE (M16)	带自锁法兰面螺母 (M16)	1		
12						
13						
14						
15						
16						
17						
18						
19						
20						
21						
22						
23						
24						

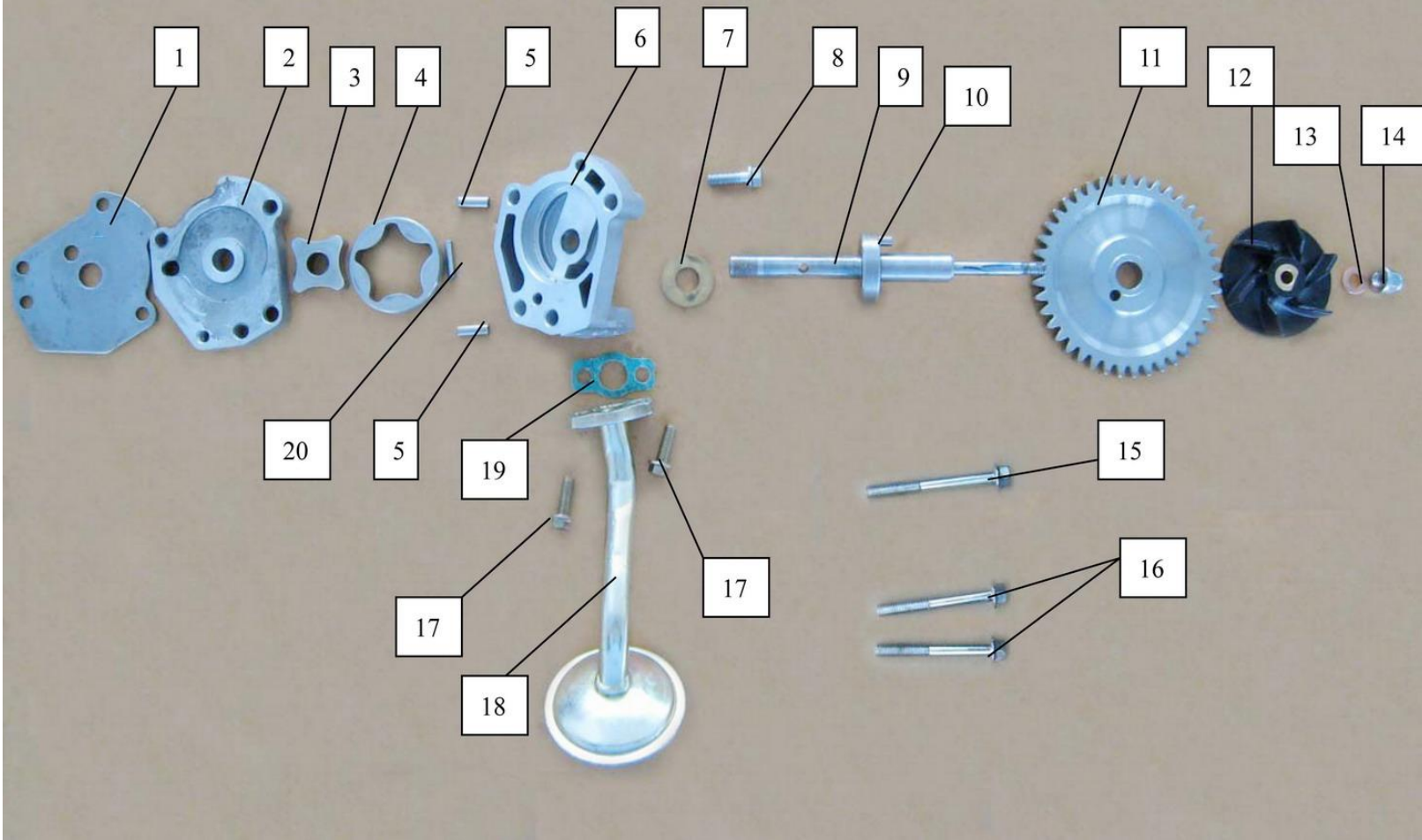
2910...E 变速鼓 SHIFT CAM



CODE	PART CODE	DESCRIPTION (EN)	DESCRIPTION (CN)	Q' TY		REMARKS
1	9111-060161	BOLT, FLANGE (M6×16)	六角法兰面螺栓(M6×16)	1		
2	9521-061007	RETAINER(φ6×φ10×2)	弹簧垫(φ6×φ10×2)	1		

3	9511-061903	WASHER ( $\phi 6 \times \phi 19 \times 2$ )	垫圈 ( $\phi 6 \times \phi 19 \times 2$ )	1		
4	25341-5020	DRIVE GEAR, SHIFT	换档拨动齿轮	1		
5	9511-153601	WASHER ( $\phi 15 \times \phi 36 \times 2$ )	垫圈 ( $\phi 15 \times \phi 36 \times 2$ )	1		
6	9616-032000	STRAIGHT PIN, SPRING	弹性圆柱销 ( $\phi 3 \times \phi 2 \times 20$ )	2		
7	25321-5020	PIN	导销	2		
8	25221-5020	SHIFT FORK 2	拨叉2	1		
9	25211-5020	SHIFT FORK 1	拨叉1	1		
10	9116-140261	BOLT, FLANGE (M14 $\times$ 26)	六角法兰面螺栓 (M14 $\times$ 26)	1		
11	9811-100288	SPRING	换档定位弹簧	1		$\phi 1 \times \phi 8$ (外) $\times 28$
12	9031-450000	FRICTION BALL (SR4.5)	换档定位钢珠 (SR4.5)	1		
13	25310-5020	SHIFT CAM	换档鼓总成	1		
14	9811-050158	SPRING	压簧	1		$\phi 0.5 \times \phi 4$ (外) $\times 15$
15	9617-052250	PIN ( $\phi 5 \times 22.5$ )	档显触销 ( $\phi 5 \times 22.5$ )	1		
16	34631-5020	HOLDER, PIN	触销定位板	1		
17	9332-060801	SCREW (M6 $\times$ 8)	沉头十字螺钉 (M6 $\times$ 8)	1		
18	9511-324001	WASHER ( ( $\phi 32 \times \phi 40 \times 2$ ) )	垫圈 ( $\phi 32 \times \phi 40 \times 2$ )	1		
19						
20						
21						
22						
23						
24						

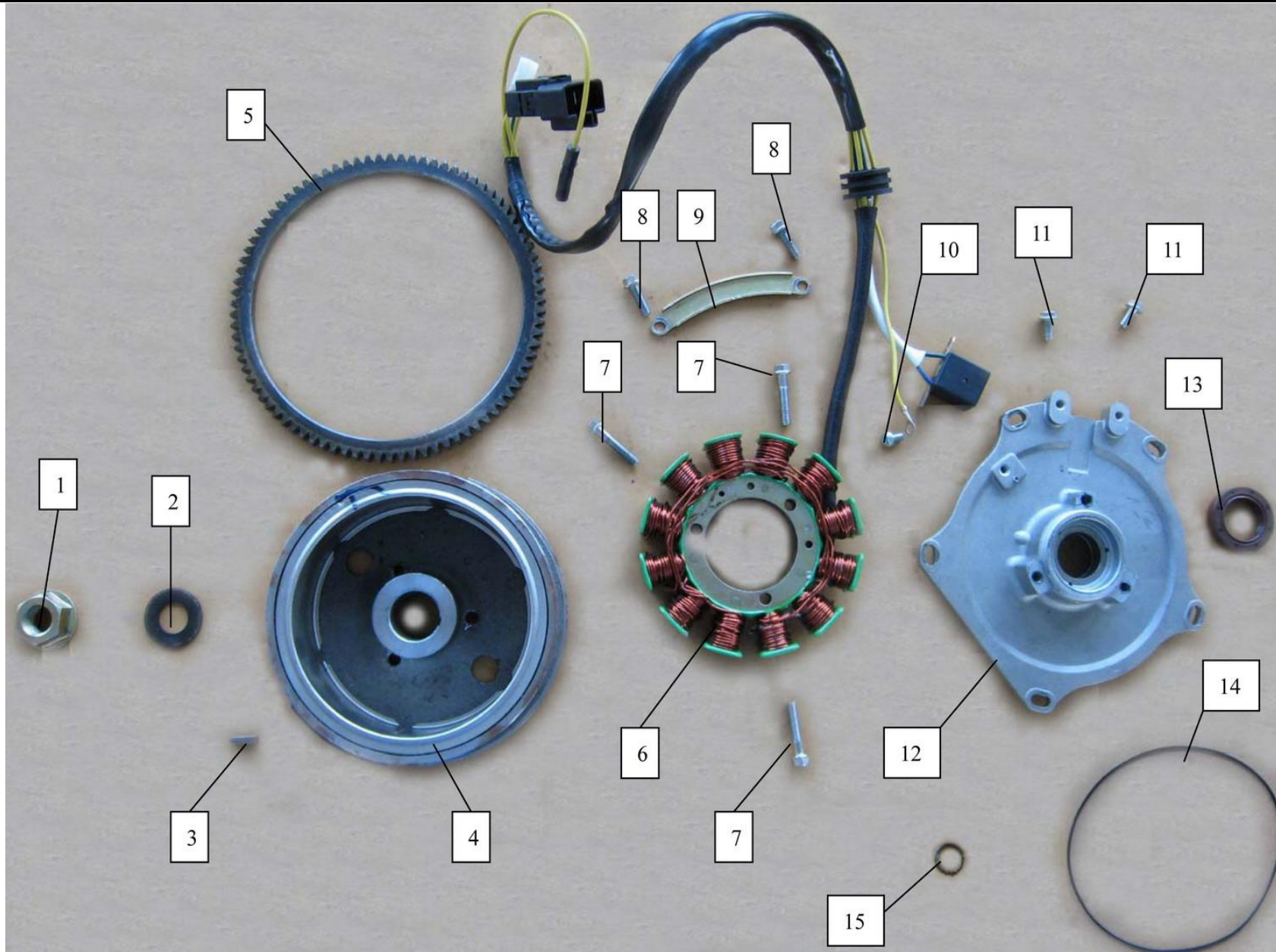
2911...E 油泵/水泵 OIL PUMP/WATER PUMP



CODE	PART CODE	DESCRIPTION (EN)	DESCRIPTION (CN)	Q' TY		REMARKS
1	16161-5020	PLATE	分油盖板	1		
2	16121-5020	COVER, OIL PUMP	油泵盖	1		

3	16131-5020	INSIDE GEAR	内转子	1		
4	16141-5020	EXTERIOR GEAR	外转子	1		
5	9611-051300	PIN, ORIENTATION ( $\phi 5 \times 13$ )	定位销 ( $\phi 5 \times 13$ )	2		
6	16111-5020	OIL PUMP BLOCK	油泵本体	1		
7	9512-102300	CUPRUM WASHER ( $\phi 10 \times \phi 23 \times 2$ )	铜垫 ( $\phi 10 \times \phi 23 \times 2$ )	1		
8	9111-060205	BOLT, FLANGE (M6 $\times$ 20)	六角法兰面螺栓 (M6 $\times$ 20)	1		
9	16151-5020	MAIN SHAFT, OIL PUMP	油泵轴	1		
10	9611-041300	PIN, ORIENTATION ( $\phi 4 \times 13$ )	定位销 ( $\phi 4 \times 13$ )	1		
11	16321-5020	SECONDARY GEAR, OIL PUMP	油泵从动齿	1		
12	17410-5020	IMPELLER	叶轮组件	1		
13	9512-061200	CUPRUM WASHER ( $\phi 6 \times \phi 12 \times 2$ )	铜垫 ( $\phi 6 \times \phi 12 \times 2$ )	1		
14	9414-060805	NUT, FLANGE (M6)	法兰面盖形螺母 (M6)	1		
15	9111-060505	BOLT, FLANGE (M6 $\times$ 50)	六角法兰面螺栓 (M6 $\times$ 50)	1		
16	9111-060455	BOLT, FLANGE (M6 $\times$ 45)	六角法兰面螺栓 (M6 $\times$ 45)	2		
17	9111-060163	BOLT, FLANGE (M6 $\times$ 16)	六角法兰面螺栓 (M6 $\times$ 16)	2		
18	16170-5020	TRAY, OIL FILTER	过滤网组件	1		
19	16181-5020	GASKET, OIL FILTER	进油口垫	1		
20	9611-041500	PIN, ORIENTATION ( $\phi 4 \times 15$ )	定位销 ( $\phi 4 \times 15$ )	1		
21						
22						
23						
24						

2912...E 磁电机 MAGNETO

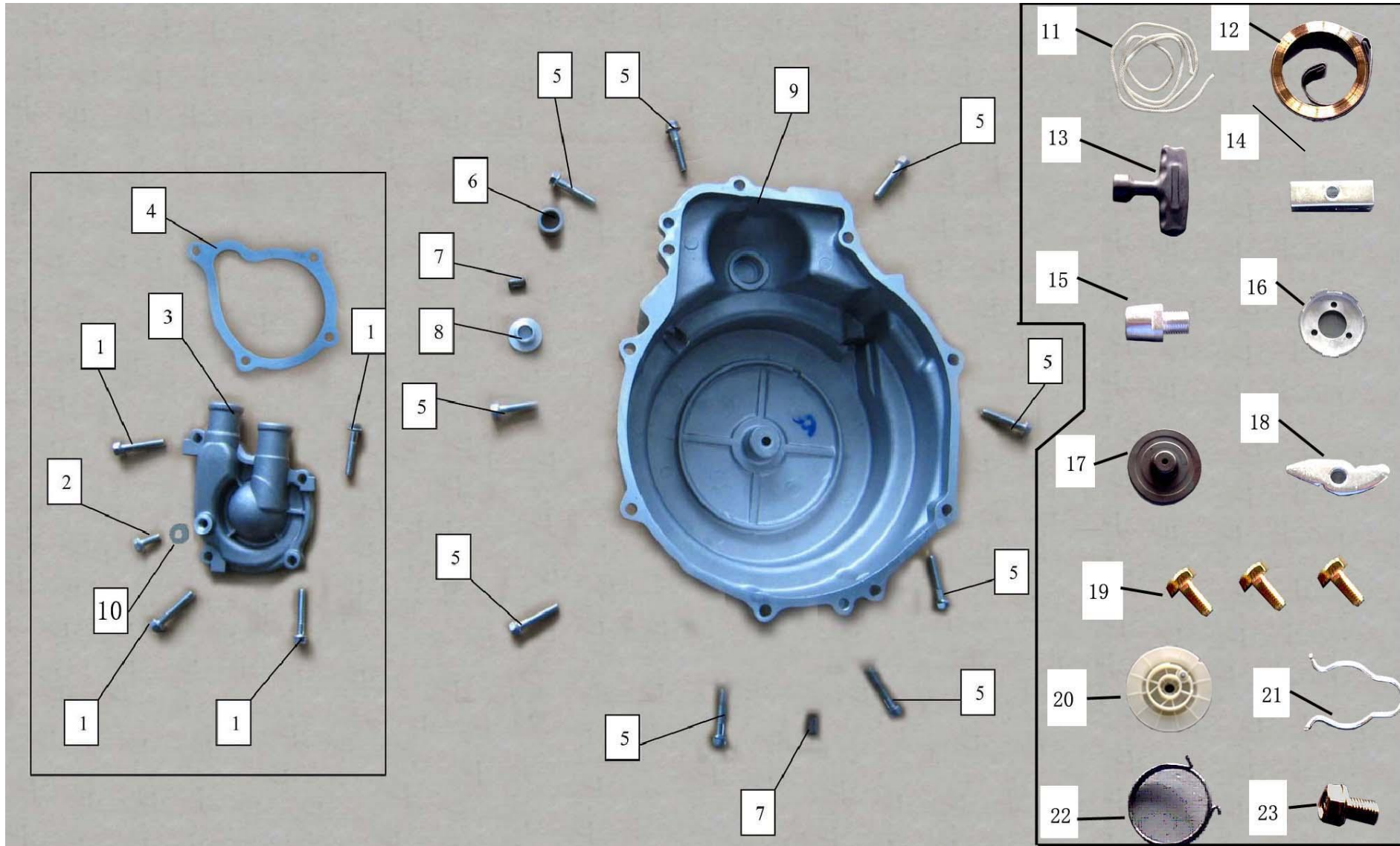


CODE	PART CODE	DESCRIPTION (EN)	DESCRIPTION (CN)	Q' TY		REMARKS
1	9411-161403	NUT, FLANGE (M16)	法兰面螺母 (M16)	1		
2	9511-163207	WASHER (Φ 16 × Φ 32 × 2)	垫圈 (Φ 16 × Φ 32 × 2)	1		

3	9681-401450	KEY (4×4×14.5)	平键 (4×4×14.5)	1		
4	32111-5020	MAGNETO ROTOR	磁电机转子	1		
5	32112-5020	DRIVE GEAR RING	启动齿环	1		
6	32120-5020	MAGNETO STATOR	线圈总成	1		
7	9111-060301	BOLT, FLANGE (M6×30)	六角法兰面螺栓 (M6×30)	3		
8	9111-060255	BOLT, FLANGE (M6×25)	六角法兰面螺栓 (M6×25)	2		
9	32211-5020	LINE HOLDER	线夹	1		
10	9312-050801	SCREW (M5×8)	盘头十字螺钉 (M5×8)	1		
11	9121-050121	BOLT, FLANGE (M5×12)	六角法兰面螺栓 (M5×12)	2		
12	11410-5020	MAGNETO SEAT ASSY	线圈固定座组件	1		
13	9911-253800	OIL SEAL (25×38×7)	油封 (25×38×7)	1		
14	9921-201300	O-RING (Φ 130×2)	O型圈 (Φ 130×2)	1		
15	9921-251500	O-RING (Φ 15×2.5)	O型圈 (Φ 15×2.5)	1		
16						
17						
18						
19						
20						
21						
22						
23						
24						



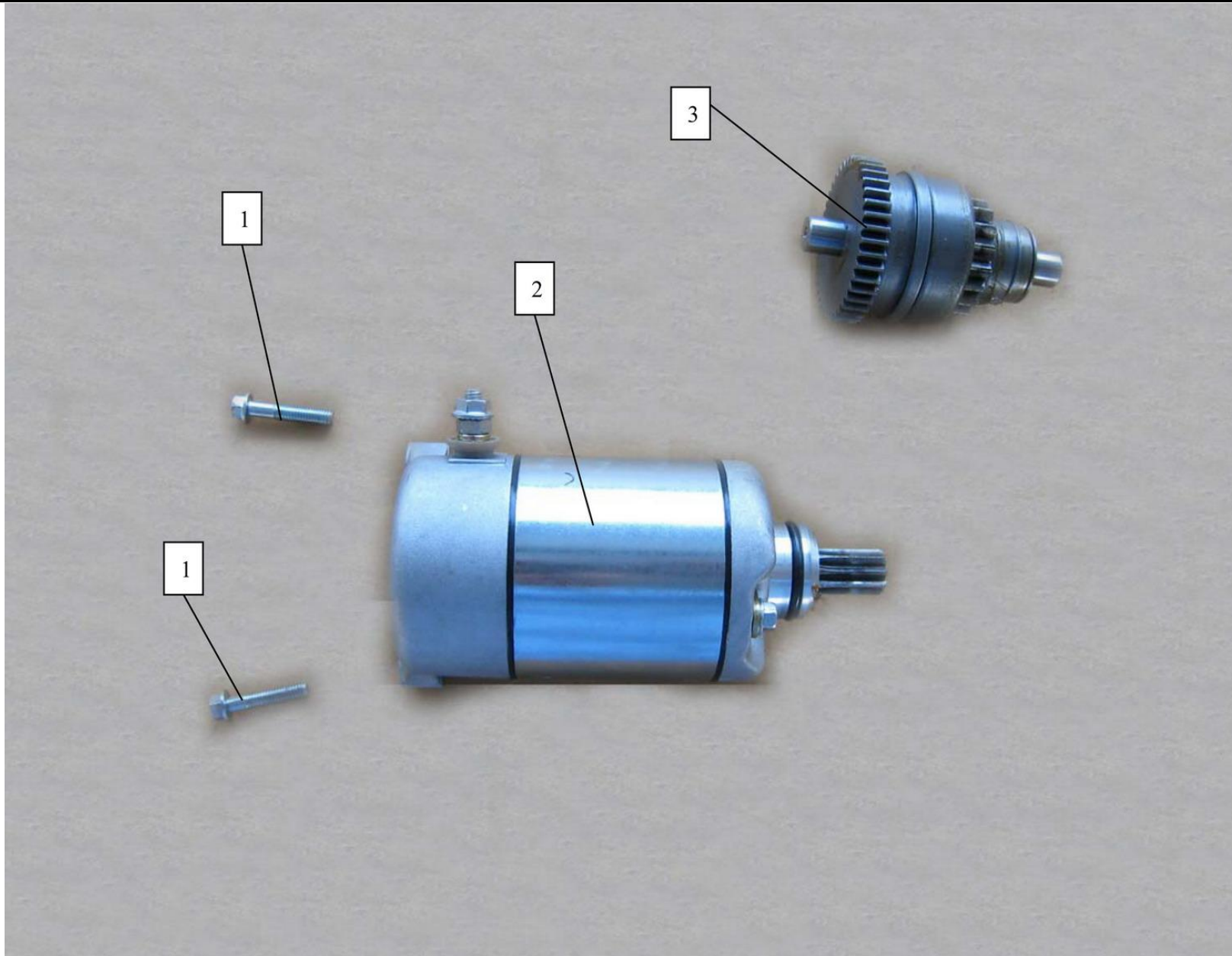
# 2913...E WATER PUMP/MAGNETO COVER/RECOIL STARTER



CODE	PART CODE	DESCRIPTION (EN)	DESCRIPTION (CN)	Q' TY		REMARKS
1	9111-060285	BOLT, FLANGE (M6×28)	六角法兰面螺栓(M6×28)	4		
2	9111-060105	BOLT, FLANGE (M6×10)	六角法兰面螺栓(M6×10)	1		

3	17431-5020	COVER, WATER PUMP	水泵盖	1		
4	17441-5020	WASHER, WATER PUMP COVER	水泵盖垫	1		
5	9111-060305	BOLT, FLANGE (M6×30)	六角法兰面螺栓(M6×30)	9		
6	9714-121000	BUSH, CLUTCH(φ12×φ17×10)	超越离合器孔衬套	1		
7	9222-250107	SOLID PIN (M2.5×10)	一字槽螺柱(M2.5×10)	2		
8	11444-5020	PLUG, TIMING	正时孔塞	1		
9	11351-5020	MAGNETO COVER	右箱盖	1		
10	9513-061200	ALUMINIUM WASHER	铝垫(φ6×φ12×1.5)	1		
11	32122-5020	ROPE	拉绳φ6*1400mm	1		
12	32123-5020	COIL SPRING	蜗转旋转弹簧	1		
13	32113-5020	HANDLE	手拉手柄	1		
14	32114-5020	COVER, HANDLE	手柄盖	1		
15	32115-5020	NESTING	嵌套	1		
16	32124-5020	STARTER PULLY	起动拉板	1		
17	32116-5020	FRICTION PLATE	离心块压板	1		
18	32117-5020	PAWL	离心块	1		
19	9111-060165	BOLT, FLANGE (M6×16)	六角螺栓M8*16	3		
20	32118-5020	SHEAVE DRUM	手拉启动盘合件	1		
21	32119-5020	SPRING CLAMP	弹簧卡	1		
22	32121-5020	PAWL SPRING	扭簧	1		
23	9111-060205	BOLT, FLANGE (M6×20)	六角法兰面螺栓(M6×20)	1		
24	263740-5020		起动结合盘组件	1		进价2元多

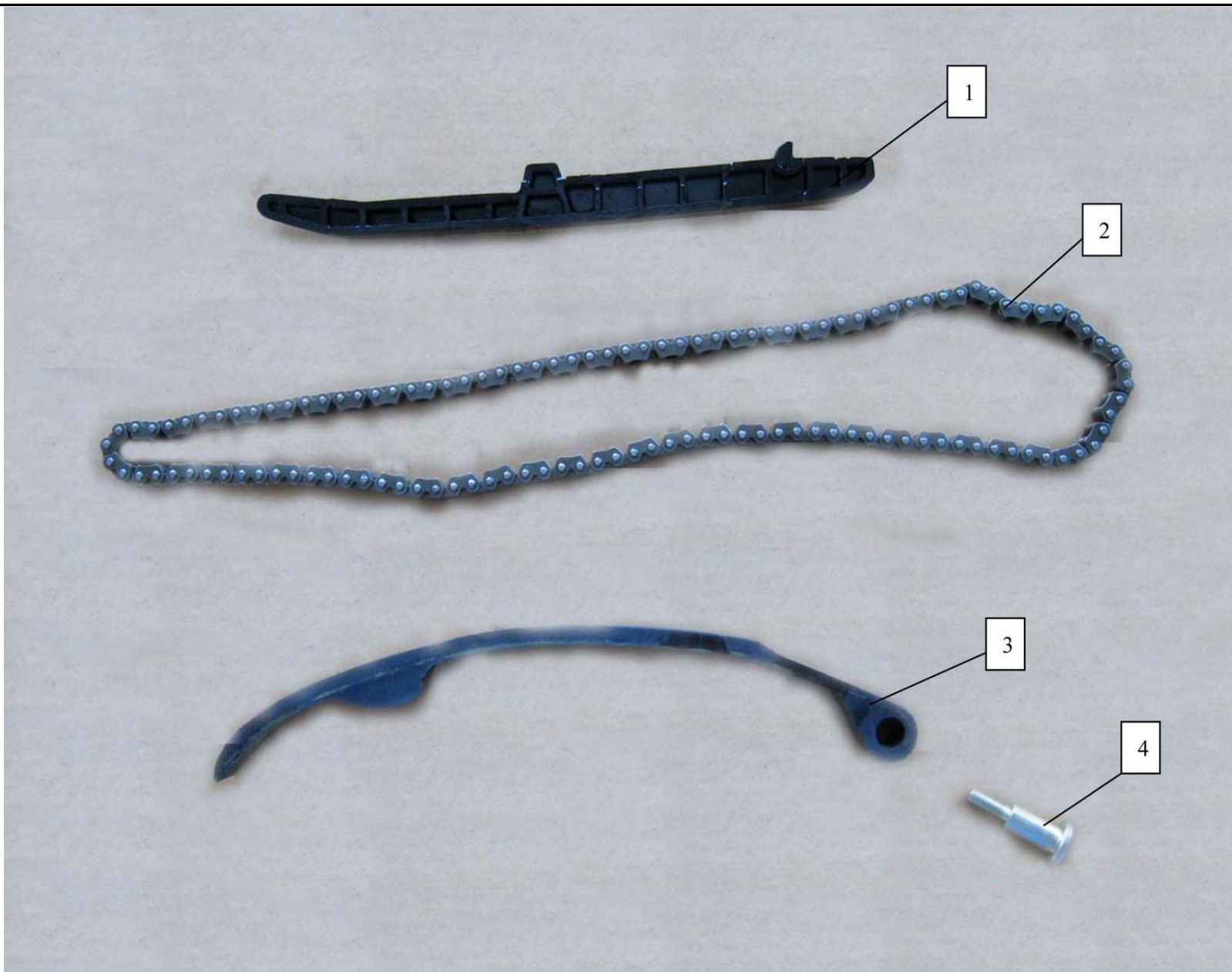
2914...E 启动电机 STARTING MOTOR



CODE	PART CODE	DESCRIPTION (EN)	DESCRIPTION (CN)	Q' TY	REMARKS
1	9111-060285	BOLT, FLANGE (M6×28)	六角法兰面螺栓(M6×32)	1	
1	GB/T 5787 M6×32	BOLT, FLANGE (M6×28)	六角法兰面螺栓(M6×28)	1	

2	31100-5020	STARTING MOTOR, ASSY	启动马达总成	1		
3	31910-5020	OVERRIDING CLUTCH	超越离合器总成	1		
4			启动马达电刷	1		付
5						
6						
7						
8						
9						
10						
11						
12						
13						
14						
15						
16						
17						
18						
19						
20						
21						
22						
23						

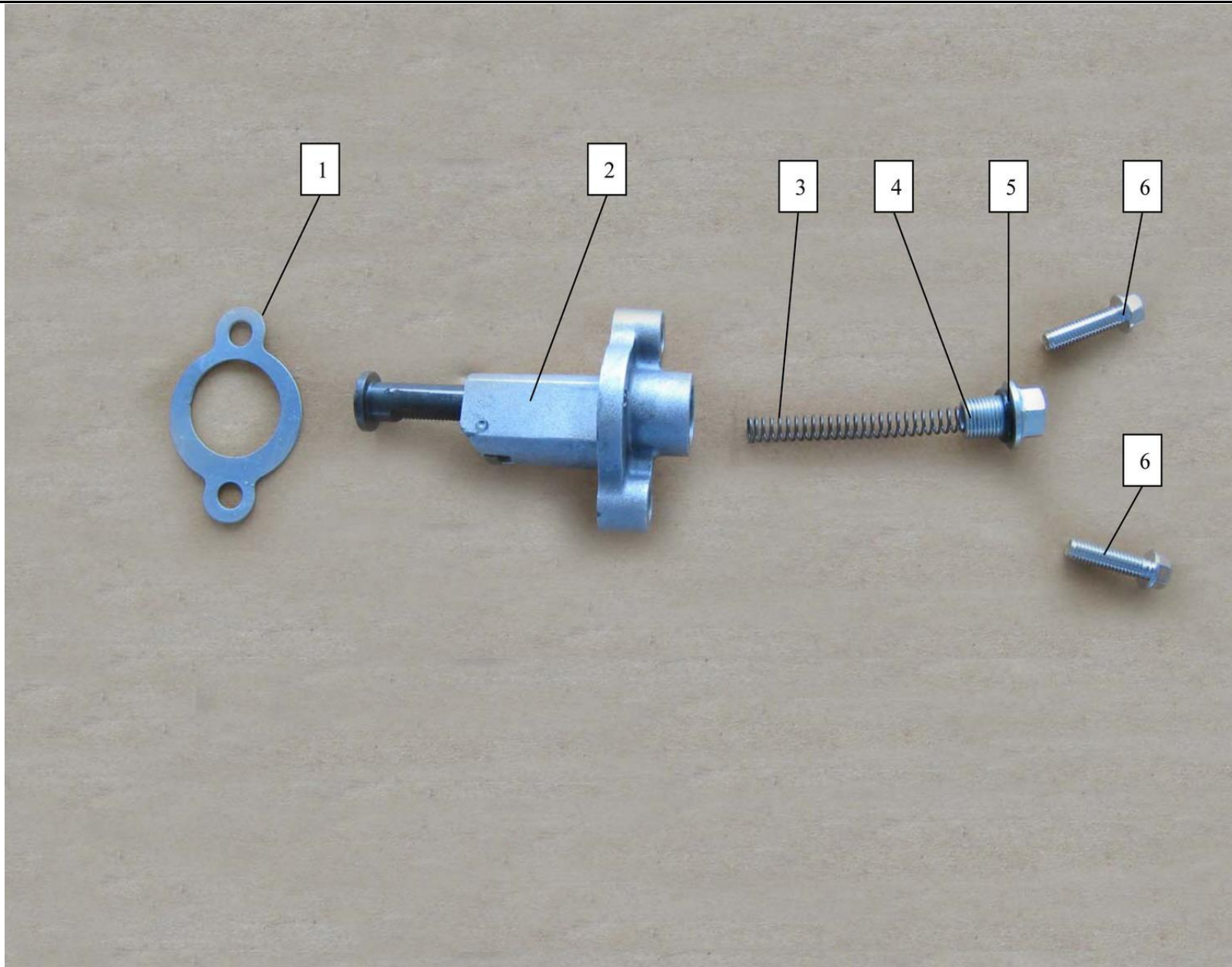
2915...E 链条/链条压板 CHAIN/HOLDER, CHAIN



CODE	PART CODE	DESCRIPTION (EN)	DESCRIPTION (CN)	Q' TY		REMARKS
1	12841-5020	CHAIN GUIDE	链条导件	1		
2	12741-5020	CHAIN, TIMING	正时链条	1		齿形链61节

3	12831-5020	TENSIONER PLATE	链条拉力杆	1		
4	9325-060323	BOLT, HOLDER	拉力杆螺栓	1		牙长15
5						
6						
7						
8						
9						
10						
11						
12						
15						
13						
14						
18						
19						
16						
17						
20						
21						
22						
23						
24						

2916...E 张紧器 TENSIONER

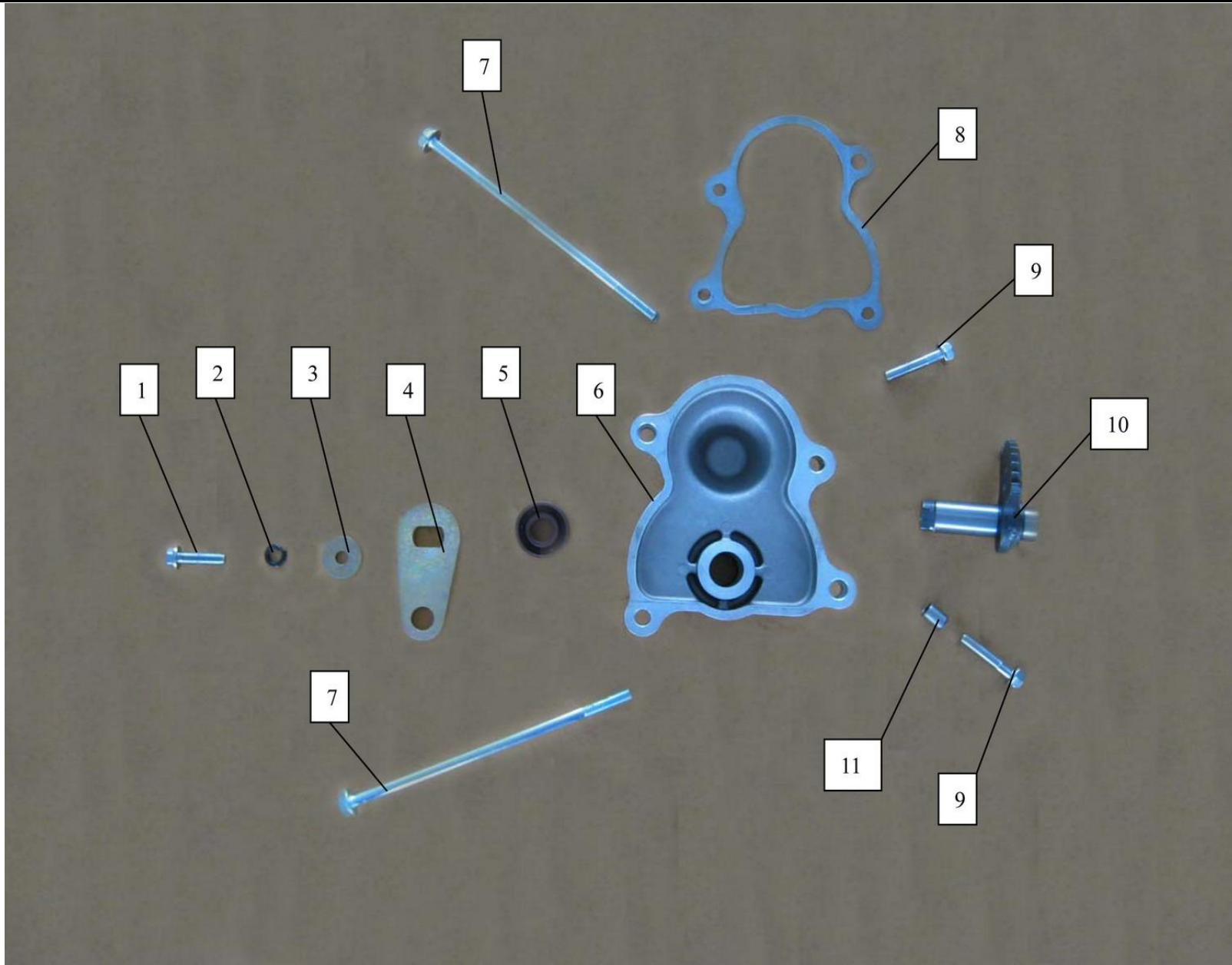


CODE	PART CODE	DESCRIPTION (EN)	DESCRIPTION (CN)	Q' TY		REMARKS
1	12851-5020	WASHER, TENSIONER	链条调整器垫	1		
2	12820-5020	TENSIONER	链条调整器总成	1		

3	9811-100708	SPRING	调整弹簧	1		$\phi 1 \times \phi 7(\text{外}) \times 70$
4	9116-120121	HOLLOW BOLT (M12×12)	六角法兰面螺栓 (M12×12)	1		
5	9011-101500	CUSHION RUBBER	胶圈 ( $\phi 10 \times \phi 15 \times 1.5$ )	1		
6	9111-060285	BOLT, FLANGE (M6×28)	六角法兰面螺栓 (M6×28)	2		
7						
8						
9						
10						
11						
12						
13						
14						
15						
16						
17						
18						
19						
20						
21						
22						
23						
24						



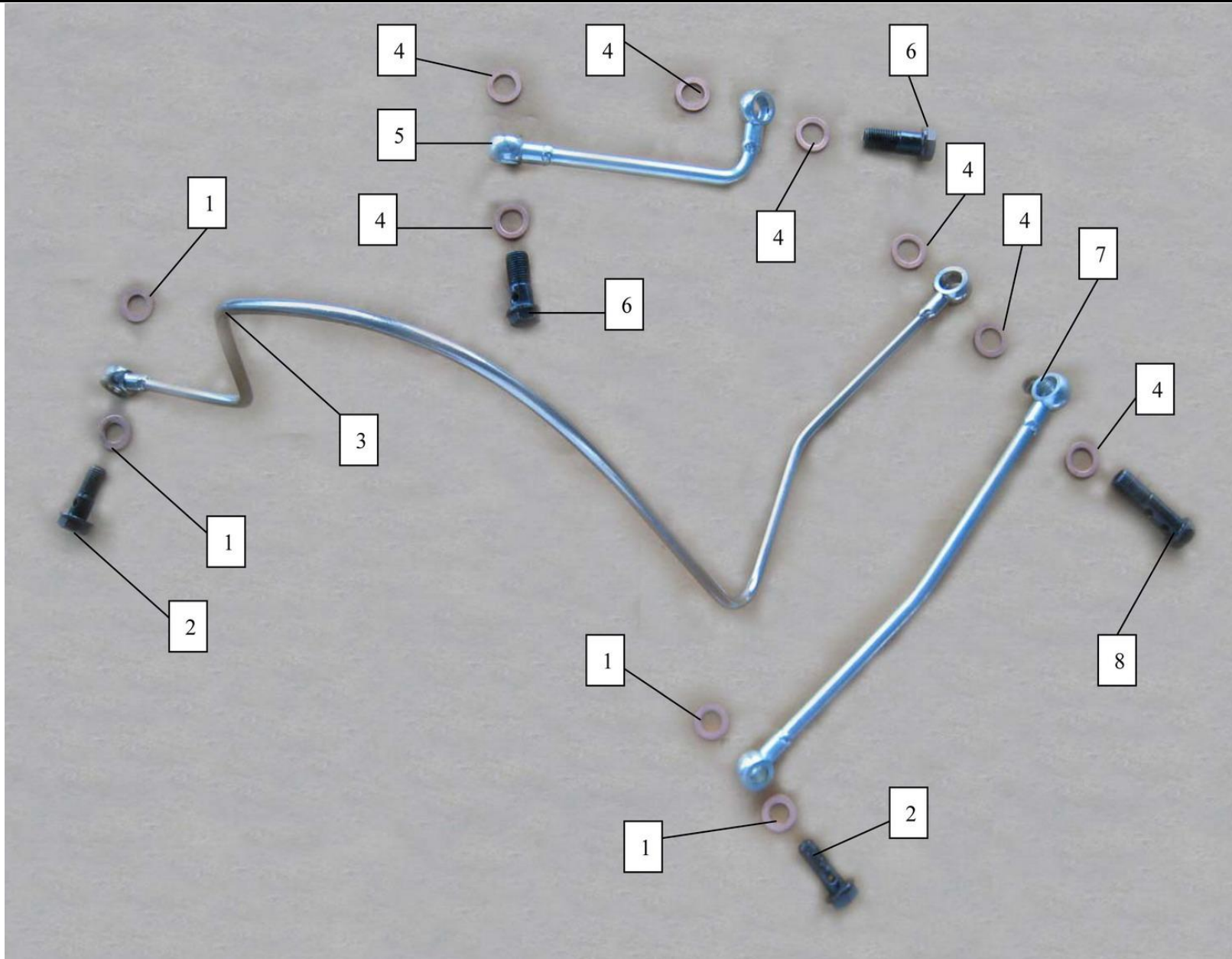
2917...E 换档箱 SHIFT COVER



CODE	PART CODE	DESCRIPTION (EN)	DESCRIPTION (CN)	Q' TY		REMARKS
1	9111-060161	BOLT, FLANGE (M6×16)	六角法兰面螺栓 (M6×16)	1		
2	9521-061007	SPRING WASHER (φ6×φ10×2)	弹簧垫圈 (φ6×φ10×2)	1		

3	9511-061903	WASHER ( $\phi 6 \times \phi 19 \times 2$ )	垫圈 ( $\phi 6 \times \phi 19 \times 2$ )	1		
4	28641-5010	ROCKER ARM, SHIFT	换档摇臂	1		
5	9911-152600	OIL SEAL ( $15 \times 26 \times 7$ )	油封 ( $15 \times 26 \times 7$ )	1		
6	25111-5020	COVER, SHIFT SHAFT	换档轴盖	1		
7	9113-061351	BOLT, FLANGE ( $M6 \times 135$ )	六角法兰面螺栓 $M6 \times 135$ )	2		
8	25121-5020	WASHER, SHIFT SHAFT	换档轴盖垫	1		
9	9111-060285	BOLT, FLANGE ( $M6 \times 28$ )	六角法兰面螺栓 ( $M6 \times 28$ )	2		
10	25510-5020	SHIFT SHAFT, ASSY	换档轴合件	1		
11	9613-081000	PIN, ORIENTATION ( $\phi 8 \times 10$ )	定位销 ( $\phi 8 \times 10$ )	1		
12						
13						
14						
15						
16						
17						
18						
19						
20						
21						
22						
23						
24						

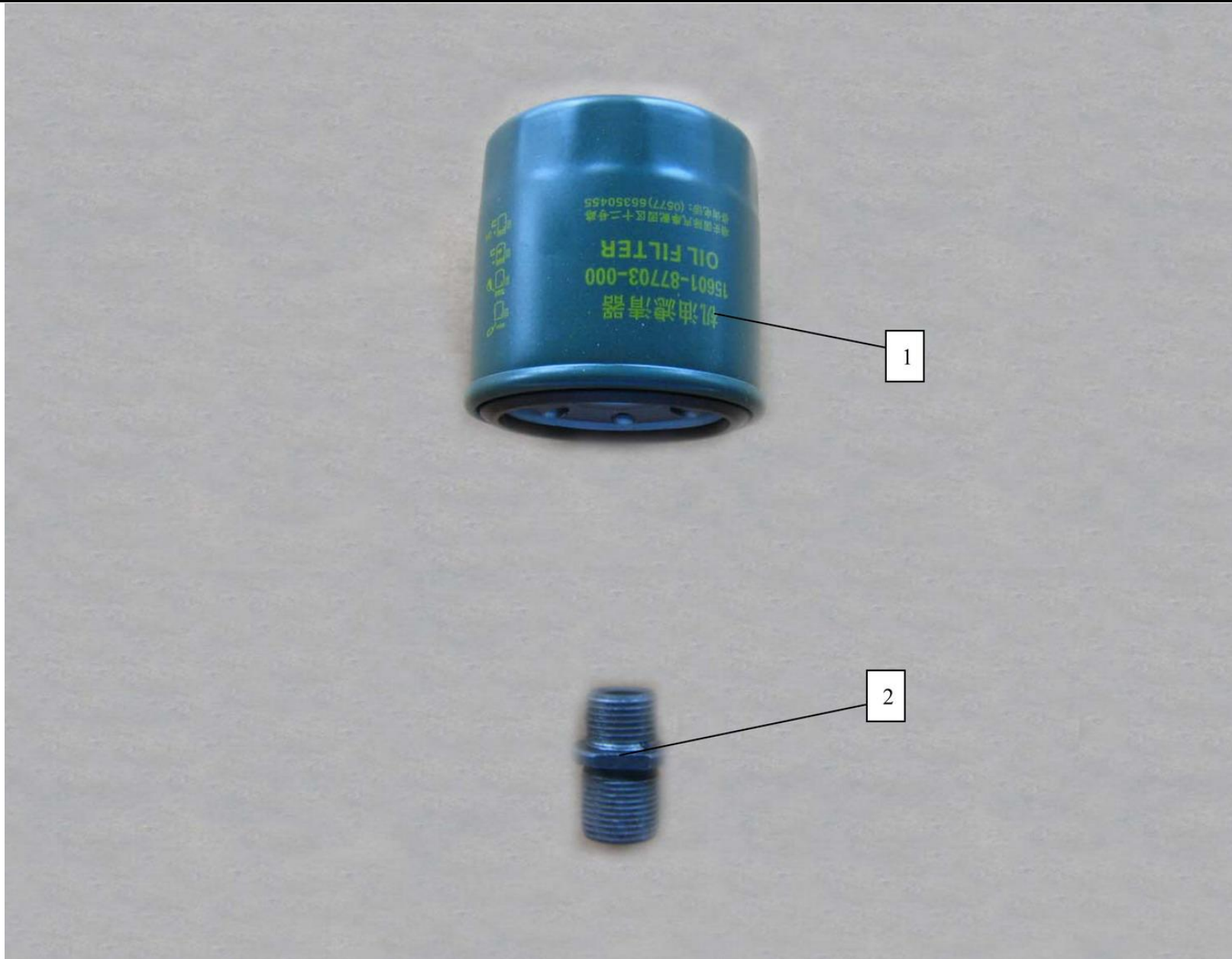
2918...E 油管 OIL PIPE



CODE	PART CODE	DESCRIPTION (EN)	DESCRIPTION (CN)	Q' TY		REMARKS
1	9512-101800	CUPRUM WASHER(φ 10× φ 18×1.5)	铜垫(φ 10× φ 18×1.5)	4		
2	9119-100283	BOLT(M10×28)	油管螺栓(M10×28)	2		

3	16820-5020	OIL PIPE B, EX	出油管B	1		
4	9512-121800	CUPRUM WASHER(φ12×φ18×1.5)	铜垫(φ12×φ18×1.5)	7		
5	16830-5020	OIL PIPE, IN	进油管	1		
6	9119-120303	BOLT(M12×30)	油管螺栓(M12×30)	2		
7	16810-5020	OIL PIPE A , EX	出油管A	1		
8	9119-120453	BOLT(M12×45)	油管螺栓(M12×45)	1		
9						
10						
11						
12						
13						
14						
15						
16						
17						
18						
19						
20						
21						
22						
23						
24						

2919...E 机油滤清器 OIL CLEANER



CODE	PART CODE	DESCRIPTION (EN)	DESCRIPTION (CN)	Q' TY	REMARKS
1	16510-5020	OIL CLEANER	机油滤清器	1	
2	16521-5020	JOINT, OIL CLEANER	机油滤清器接头	1	

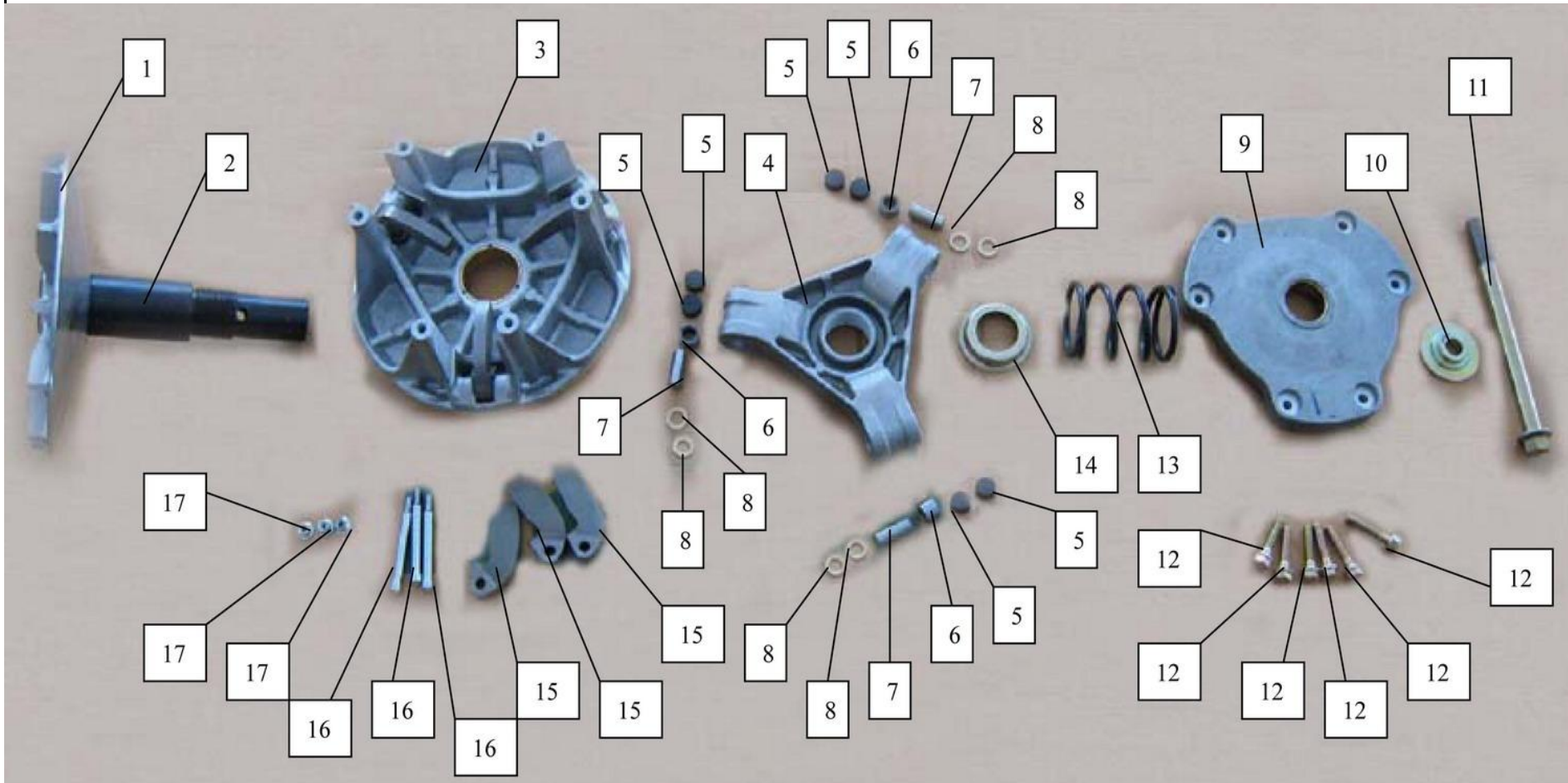
2920...E 皮帶罩底板 SEAT, STRAP COVER



CODE	PART CODE	DESCRIPTION (EN)	DESCRIPTION (CN)	Q' TY		REMARKS
1	9111-060185	BOLT, FLANGE (M6×18)	六角法兰面螺栓 (M6×18)	3		
2	11441-5020	HOLDER	曲轴隔板	1		

3	11333-5020	SEAL RING	左箱盖下体密封胶垫	1		
4	9332-061201	SCREW (M6×12)	沉头十字螺钉 (M6×12)	5		
5	11442-5020	HOLDER, SHAFT SET (UPPER)	驱动轴隔板上	1		
6	11443-5020	HOLDER, SHAFT SET (UNDER)	驱动轴隔板下	1		
7	11340-5020	CVT COVER, LEFT (UPPER)	左箱盖下体组件	1		
8						
9						
10						
11						
12						
13						
14						
15						
16						
17						
18						
19						
20						
21						
22						
23						
24						

2921...E 主动皮带盘 FIRSTLY SHEAVE

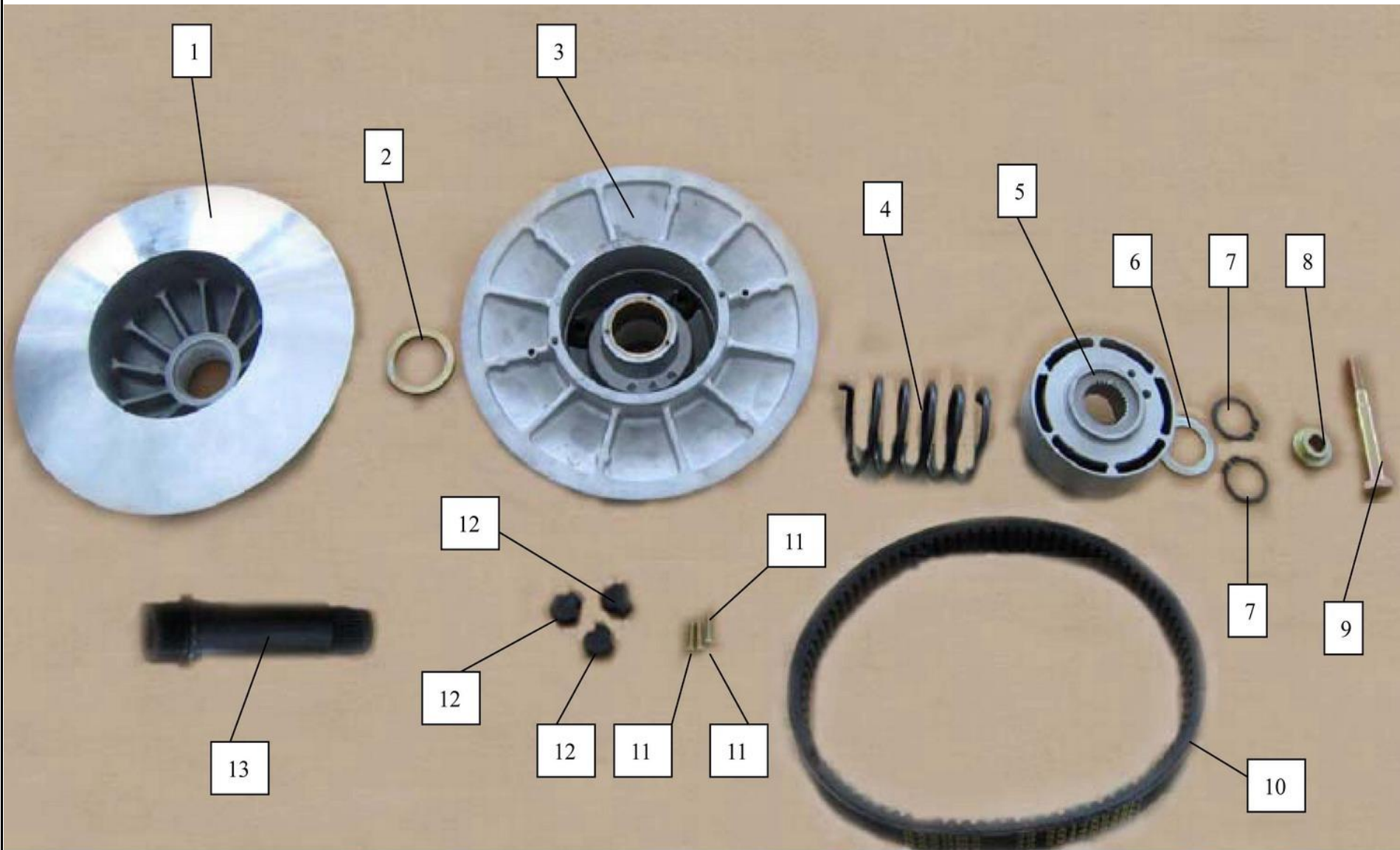


CODE	PART CODE	DESCRIPTION (EN)	DESCRIPTION (CN)	Q' TY	REMARKS
1	21513-5020	FAN, CVT	CVT风扇	1	
2	21511-5020	DRIVE PLATE, CVT	CVT主动盘	1	
3	21530-5020	DRIVE GEAR, CVT	CVT主动轮组件	1	
4	21521-5020	HOLDER, BELT WHEEL	皮带轮压板	1	
5	21525-5020	WASHER, GLIDE	滑动垫合件	6	



6	21522-5020	SPACER, DRIVE	传动套合件	3		
7	21524-5020	SHAFT, ROLLER	滚柱轴	3		
8	21523-5020	WASHER, ROLLER	滚柱垫	6		
9	21540-5020	HOLDER, SPRING	弹簧座组件	1		
10	9541-134003	WASHER	台阶垫	1		
11	9114-121603	BOLT, FLANGE (M12×160)	六角法兰面螺栓 (M12×160)	1		
12	9113-060303	BOLT, FLANGE (M6×30)	六角法兰面螺栓 (M6×30)	6		
13	9811-450651	SPRING, CVT	CVT主动轮回位弹簧	1		
14	9431-321101	NUT	圆螺母	1		
15	21514-5020	CLUTCH PLATE	皮带轮离心块	3		
16	9323-055505	PIN	销钉	3		
17	9411-050603	NUT, FLANGE (M5)	六角法兰面锁紧螺母 (M5)	3		
18						
19						
20						
21						
22						
23						
24						

2922...E 从动皮带盘 SECONDARY SHEAVE



CODE	PART CODE	DESCRIPTION (EN)	DESCRIPTION (CN)	Q' TY		REMARKS
1	21550-5020	PLATE, LEFT SIDE	左侧板组件	1		
2	9511-385103	WASHER (Φ 38 × Φ 51 × 2)	垫圈 (Φ 38 × Φ 51 × 2)	1		

3	21560-5020	PLATE, RIGHT SIDE	右侧板组件	1		
4	9811-550978	TORSION SPRING	扭簧(Φ5.5×Φ68×97)	1		
5	21582-5020	CLUTCH CLAW	离合爪	1		
6	9511-314501	WASHER(Φ38×Φ51×2)	垫圈(Φ38×Φ51×2)	1		
7	9561-300107	CIRCLIP(Φ30×1)	C形挡圈(Φ30×1)	2		
8	9541-133003	WASHER(Φ13×Φ30×12)	台阶垫(Φ13×Φ30×12)	1		
9	9126-101003	BOLT(M10×100) BOLT(M10×100)	六角头螺栓(M10×100)	1		
10	21571-5020	BELT, CVT	CVT皮带	1		
11	9312-041801	SCREW(M4×18)	盘头十字螺钉(M4×18)	3		
12	21581-5020	GLOBE, TRANSITION	过渡球头	3		
13	21552-5020	SHAFT, GLIDE	滑动轴	1		
14						
15						
16						
17						
18						
19						
20						
21						
22						
23						
24						

2923...E 皮帶罩 COVER, BELT



CODE	PART CODE	DESCRIPTION (EN)	DESCRIPTION (CN)	Q' TY		REMARKS
1	9113-060323	BOLT, FLANGE (M6×32)	六角法兰面螺栓 (M6×32)	17		
2	9711-071603	SPACER	衬套 (φ6.5×φ8.5×16)	17		

3	11332-5020	CUSHION RUBBER, CVT COVER	左箱盖橡胶垫	1		
4	11330-5020	CVT COVER, LEFT (LOWER)	左箱盖上体组件	1		
5						
6						
7						
8						
9						
10						
11						
12						
13						
14						
15						
16						
17						
18						
19						
20						
21						
22						
23						